

Posters

Yerba Buena Ballroom – Salon 7-8, Lower B2 Level

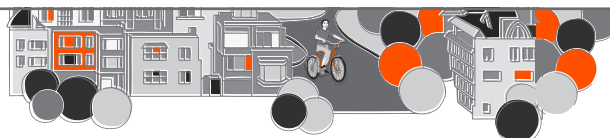
All posters will be on display during Sunday night's Poster Reception and on Monday and Tuesday. Poster presenters with odd poster numbers will present at 11:30 am–1:00 pm on Monday and posters with even numbers will present 11:15 am–12:45 pm on Tuesday.

Agricultural Finance and Farm Management

- 1** A Choice Experiment to Examine Farmer Preferences for Joint Venture Farm Business Structures
Brendan Lynch, The University of Adelaide & CSIRO; Marit Ellen Kragt, University of Western Australia; Rick Llewellyn, CSIRO, Australia; **Wendy Umberger**, University of Adelaide
- 2** A Credit Migration Analysis of the Financial Vitality of Female and Racial Minority Borrowers of the Farm Service Agency under Recessionary Conditions
Xiaofei Li, University of Georgia; Cesar Escalante, University of Georgia
- 3** A Multiple Indicator-Multiple Causation Analysis of Pasture Management and Prescribed Grazing Practices by Beef Cattle Operators
Kristen Oliver, University of Tennessee; **Kimberly Jensen**, University of Tennessee; Dayton Lambert, University of Tennessee; Christopher Clark, University of Tennessee; Burton English, University of Tennessee; James Larson, University of Tennessee; Tun-Hsiang Yu, University of Tennessee; Chad Hellwinkcel, University of Tennessee
- 4** Capital Structure in Agricultural Sole Proprietorships
Michael Friis Pedersen, University of Copenhagen
- 5** Cash Rents, Imputed Returns, and the Valuation of US Farmland: A Time-Series Analysis
James Harris, USDA-Economic Research Service; Charles Hallahan, USDA-Economic Research Service; Sarah Tulman, USDA-Economic Research Service; **Kenneth Erickson**, USDA-Economic Research Service
- 6** Irrigation Adoption in Central North Dakota: A Real Options Approach
Ryan Larsen, North Dakota State University; David Ripplinger, North Dakota State University
- 7** Organic Wheat: Profitable Niche Market for Conventional Wheat Producers?
Kathleen Painter, University of Idaho; Kendall Kahl, University of Idaho
- 8** Succession Planning and Perceived Obstacles and Attractions for Future Generations Entering Beef Cattle Production
Lee Schulz, Iowa State University; Patrick Gunn, Iowa State University; Georgeanne Artz, Iowa State University
- 9** The Contribution of Energy Extraction Activities to Farm Household Wellbeing: An Analysis of Oil, Gas, and Wind Lease and Royalty Income in USDA's 2012 Agricultural Resource Management Survey
James Williamson, USDA-Economic Research Service; Damona Doye, Oklahoma State University
- 10** The Role of Gender in US Agricultural Productivity
Robert Williams, USDA-Economic Research Service; James Harris, USDA-Economic Research Service; Ashok Mishra, Louisiana State University

Agribusiness Economics and Management

- 12** Greywater Footprint and Economic Tradeoff Analysis of Switchgrass Supply Chains: A Case Study of Tennessee
Jia Zhong, The University of Tennessee, Knoxville; Tun-Hsiang Yu, University of Tennessee; Christopher Clark, University of Tennessee; Burton English, University of Tennessee; James Larson, University of Tennessee
- 13** Has the Spread of Glyphosate-Resistant Weeds Led to Higher Glyphosate Application Rates?
Dallas Wood, North Carolina State University
- 14** How to Manage Food Safety Scandals: The Case of 2013 Fonterra Recall
Daniel Sumner, University of California, Davis; Aaron Smith, University of California, Davis; Bo Xiong, University of California, Davis
- 15** Hybrid Rice Seed Adoption and the Potential for Genetically Modified Rice
Rachael Brown, University of Kentucky; William McBride, USDA-Economic Research Service
- 16** It is All about Location?: An Analysis of the Factors that Affect the Location Decision of Sugarcane Processing Mills in Goiás and Mato Grosso do Sul, Brazil
Ana Claudia Sant'Anna, Kansas State University; Gabriel Granco, Kansas State University; Jason Bergtold, Kansas State University; Marcellus Caldas, Kansas State University



Posters

- 17** Loftus Ranches: A Hop into the Future
David Widmar, Purdue University; Allan Gray, Purdue University; Michael Boehlje, Purdue University
- 18** Reoptimization or Bias? Factors Affecting Changes in Production Decisions of Farmers
Joshua Woodard, Cornell University; *Leslie Verteramo Chiu*, Cornell University; Gabriel Power, Laval University; Dmitry Vedenov, Texas A&M University; Steven Klose, Texas A&M University
- 19** Shelton's Poultry: A Business Strategy Case Study
Benjamin Lehan, California State Polytechnic University, Pomona; *Jon Phillips*, California State Polytechnic University, Pomona; Abraham Gomez, California State Polytechnic University, Pomona; Cesar Martin, California State Polytechnic University, Pomona; Soraya Nolasco, California State Polytechnic University, Pomona; Chastity Rosales, California State Polytechnic University, Pomona; Bryce Von Helms, California State Polytechnic University, Pomona; Dennis Wu, California State Polytechnic University, Pomona
- 20** Standing on the Shoulders of Giants: Coherence and Biotechnology Innovation Performance
Leonardo Sanchez, The Littoral Polytechnic School; Desmond Ng, Texas A&M University
- 21** Understanding the Role of Government on Agri-food Private Standards in Developed Countries: Preliminary Empirical Evidence from Canada
Deepananda Herath, Agriculture and Agri-Food Canada; Samuel Bonti-Ankomah, Agri-Food Canada

Behavioral & Institutional Economics

- 22** A Framework for Coordinating Smallholder Production and Transactions in African Value Chains
Ryan Vroegindewey, Michigan State University
- 23** Asymmetric Production Effects of Payment Supports: Evidence from the 2008 Farm Bill
Mesbah Motamed, USDA-Economic Research Service
- 24** Can Institutions Resolve the Paradox of Choice? A Field Experiment on Craft Beer
Donald Malone, III, Oklahoma State University; Jayson Lusk, Oklahoma State University
- 25** Greek-Style Yogurt as a Protein Alternative in Child Nutrition in the National School Lunch Program in the United States
Senarath Dharmasena, Texas A&M University; Peter Murano, Texas A&M University
- 26** History, Culture and Contract Farming in West Africa
David Wuepper, Technical University Munich; Johannes Sauer, Technical University Munich
- 27** Legume Adoption and Farmer Preferences for Crop System Attributes: Evidence from Malawi's Central and Southern Regions
David Ortega, Michigan State University; *Kurt Waldman*, Michigan State University; Robert Richardson, Michigan State University; Daniel Clay, Michigan State University
- 28** Massachusetts 2006 Health Insurance Reform: Analysis of the Source of Insurance Coverage
Mouhcine Guettabi, University of Alaska; Jeffrey Jordan, University of Georgia; *Abdul Munasib*, University of Georgia; Devesh Roy, International Food Policy Research Institute
- 29** Nitrogen Decision Making under Uncertainty: Role of Subjective Beliefs
Sandip Agarwal, Iowa State University; Keri Jacobs, Iowa State University; Quinn Weninger, Iowa State University
- 30** Radioactively Contaminated? Seafood Preferences among Japanese after the Fukushima Nuclear Disaster
Koichi Yamaura, Tokyo University of Agriculture and Technology; Hikaru Hanawa Peterson, Kansas State University
- 31** The Reference Price Effect on Crop Producers Hedging Behaviors
Ziran Li, Iowa State University; Dermot Hayes, Iowa State University

Demand and Price Analysis

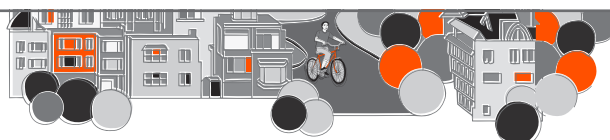
- 32** An Evaluation of Price Forecasts of the Cattle Market under Structural Changes
Selin Guney, North Carolina State University; Barry Goodwin, North Carolina State University
- 33** Causal Relationships among World Fertilizer Markets
Seon Woong Kim, Oklahoma State University; Wade Brorsen, Oklahoma State University
- 34** Data Collection Period and Food Demand System Estimation using Cross Sectional Data
Tullaya Boonsaeng, Texas Tech University; Carlos Carpio, Texas Tech University

Posters

- 35 Dependence in Spikes of Energy and Agricultural Prices
Austin Ramsey, North Carolina State University
- 36 Demand Spillovers of Food Recalls in Differentiated Product Markets
Jeta Rudi, University of Minnesota; Metin Cakir, University of Minnesota
- 37 Diesel Fuel Price Elasticities in the US Trucking Industry
Jen He, University of Maryland
- 38 Elasticity of Demand for Cigarettes in the US: Evidence from Quantile Regression Analysis
Vardges Hovhannisyán, University of Minnesota; Vahe Heboyan, University of South Carolina
- 39 Forecasting Local Grain Prices: An Evaluation of Composite Models in 500 Corn Cash Markets
Xiaojie Xu, North Carolina State University; Walter Thurman, North Carolina State University
- 40 Price and Income Elasticities of Demand for Canine Wellness Visits: An Exploratory Analysis
J. Scott Shonkwiler, University of Georgia; Maureen Killenny, National Center for Food and Agricultural Policy; Stanley Johnson, National Center for Food and Agricultural Policy; Michael Dicks, American Veterinary Medical Association
- 41 Price Volatility in Food and Fuel Markets
Henry An, University of Alberta; Feng Qiu, University of Alberta; James Rude, University of Alberta
- 42 The Informational Content of Inventory Announcements: Intraday Evidence from Crude Oil Futures Market
Shiyu Ye, University of Georgia; Berna Karali, University of Georgia
- 43 Transmission of the International Price of Maize to the Mexican Regions
Jose Nuno-Ledesma, Purdue University

Environmental and Nonmarket Valuation

- 44 Do Improvements in Environmental Performance Lead to Job Loss?
Camila Stark, National Renewable Energy Laboratory; Madhu Khanna, University of Illinois at Urbana-Champaign; Xiang Bi, University of Florida
- 45 Estimating Producers' Willingness to Supply Switchgrass as a Bioenergy Crop
Mustapha Albassan, University of Nebraska-Lincoln; Richard Perrin, University of Nebraska; Lilyan Fulginiti, University of Nebraska
- 46 Financial Impact of Positive Environmental Media Release
Yanbing Wang, Purdue University; Michael Delgado, Purdue University; Neha Khanna, Binghamton University; Vicki Bogan, Cornell University
- 47 Scale Heterogeneity, Consequentiality, and Willingness-to-Pay for Public Goods: The Case of Beef Choices
Xiaogu Li, University of Tennessee; Kimberly Jensen, University of Tennessee; Christopher Clark, University of Tennessee; Dayton Lambert, University of Tennessee
- 48 The Evolution of Wilderness Demand: Investigating Price, Income, and Other Demographic Effects with a Quarter-century of Data
Thomas Holmes, USDA-Forest Service; *Jeffrey Englin*, Arizona State University
- 49 The Impact of Climate Change on Corn Production in the Southeastern US and the Adaptation Strategy
Juhyun Oh, University of Florida; Zhengfei Guan, University of Florida; Kenneth Boote, University of Florida
- 50 Using a Choice Experiment to Assess the Multiple Values of Land in Agricultural Uses in a Peri-urban Area: An Application to Edmonton, Canada
Haoluan Wang, University of Alberta; Brent Swallow, University of Alberta
- 51 Using Assurance Contract to Encourage Private Provision of Ecosystem Services: Evidence from a Pilot Field Experiment
Pengfei Liu, University of Connecticut; Stephen Swallow, University of Connecticut
- 53 Valuing the Impact of Harmful Algal Blooms on Lake Erie Beaches Using a Benefit Function Transfer: Is it Worth It?
Leah Palm-Forster, Michigan State University; Frank Lupi, Michigan State University
- 54 Water Quality Improvements in Florida: A Benefits Transfer Valuation Approach
Sergio Alvarez, Florida Department of Agriculture and Consumer Services; *Serbat Asci*, California State University, Fresno



Posters

- 55 Willingness-to-Pay and Willingness to Accept Shale Drilling: A Survey of Ohio Residents
Mitchell Livy, The Ohio State University; Allen Klaiber, The Ohio State University; Sathya Gopalakrishnan, The Ohio State University; Brian Roe, The Ohio State University

Experimental Economics

- 56 Assessing the Impact of Information and Social Norms on Energy Use of Non-Ratepayers Evidence From a Field Experiment
Christine Lasco Crago, University of Massachusetts Amherst; *Elizabeth Hunter*, University of Massachusetts Amherst; John Spraggon, University of Massachusetts Amherst
- 57 Consumer Willingness-to-pay Price Premiums for the Provision of Water-quality Environmental Services
Maik Kecinski, University of Delaware; Kent Messer, University of Delaware; Audrey Peo, University of Delaware
- 58 Peer Comparison Feedback and Financial Incentive in Inducing Healthy Behavior: Evidence from Dormitory Roommate Assignments
Bhagyashree Katare, University of Minnesota; Timothy Beatty, University of California, Davis
- 59 Policy Effectiveness in a Common Property Resource with Threshold Uncertainty and Heterogeneous Users
Alexander Maas, Colorado State University; Thomas Brown, Forest Service; Christopher Goemans, Colorado State University; Stephan Kroll, Colorado State University; Dale Manning, Colorado State University
- 60 Social Networks and their Role in Threshold Public Goods Games: An Experimental Study
Ursula Kreitmair, Indiana University; Simanti Banerjee, University of Nebraska-Lincoln; James Walker, Indiana University
- 61 Spatial Attribution in Nonpoint Source Pollution Settings
Jacob Fooks, University of Delaware; Kent Messer, University of Delaware; Jordan Suter, Colorado State University
- 62 Survey Response Rate and Potential Response Bias Induced by Selected Techniques: The Case of Michigan Greenhouse Growers Survey
Feng Wu, University of Florida; Zhengfei Guan, University of Florida
- 63 Tracking Turnips and Other Measures of Food Literacy Education: The Impact of a School-based Intervention on Children's Attitudes, Knowledge and Food Choices
Kristin Kiesel, California State University, Sacramento; Amber Stott, Food Literacy Center

Food and Agricultural Marketing

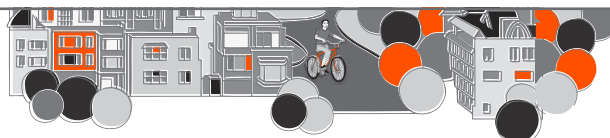
- 64 Adapting Community Supported Agriculture to Modern Markets – Where is it Working?
Timothy Woods, University of Kentucky; Debra Tropp, USDA-Agricultural Marketing Service
- 65 Commodity Effects of Food Away From Home
James Binkley, Purdue University; *Yuhang Liu*, Purdue University
- 66 Do Firms Leverage the FDA Nutrient Label Rounding Rules?
Melissa Wright, Washington State University; Timothy Beatty, University of California, Davis; Hayley Chouinard, Washington State University
- 67 Economically Optimal Timing of Insect Control in Food Processing Facilities: An Options Approach
Suling Duan, Oklahoma State University; *Brian Adam*, Oklahoma State University; Wade Borsen, Oklahoma State University
- 68 Effects of Typical Assumptions on the Measurement of the Upstream Transmission of Checkoff Program Benefits
Sang Hyeon Lee, Korea Rural Economic Institute; Gary Williams, Texas A&M University
- 69 Estimating Market Power of Agricultural and Food Industries: An Issue of Data Aggregation
Jung Min Lee, Oklahoma State University; Chanjin Chung, Oklahoma State University
- 70 Evaluating the Marketing Impact of a Regional Branding Program Using Contingent Valuation Methods: The Case of the Appalachian Grown™ Branding Program
Carlos Carpio, Texas Tech University; Leah Mathews, University of North Carolina - Asheville; Tullaya Boonsaeng, Texas Tech University; Allison Perrett, Appalachian Sustainable Agriculture Project; Katie Descieux, Appalachian Sustainable Agriculture Project

Posters

- 71 Food Waste: The Role of Date Labels, Package Size, and Product Category
Norbert Wilson, Auburn University; Bradley Rickard, Cornell University; Shuay-Tsyr Ho, Cornell University; Rachel Saputo, Cornell University
- 72 Hunters' Perspectives on Animal Welfare and Meat Demand: An Application of Maximum Difference and Choice Experiment Methods
Elizabeth Byrd, Purdue University; Nicole Widmar, Purdue University; John Lee, Purdue University; Ben Gramig, Purdue University; Michael Wilcox, Jr., Purdue University; Joan Fulton, Purdue University
- 73 Market Integration and Price Leadership in the Low Quality Rice Export Market
Chotima Pornsawang, North Carolina State University; **Roderick Rejesus**, North Carolina State University; Samarendu Mohanty, International Rice Research Institute
- 74 Mechanisms of Patent Licensing for Varietal Innovation
Pratikshya Sapkota Bastola, Washington State University; Karina Gallardo, Washington State University; Jill McCluskey, Washington State University; Bradley Rickard, Cornell University
- 75 Potential Economic Impacts of a Highly Pathogenic Avian Influenza Outbreak on Upper Midwestern United States Table-Egg Laying Operations
Jada Thompson, Colorado State University; Dustin Pendell, Colorado State University; Todd Weaver, USDA-Animal and Plant Health Inspection Service; Sasidhar Malladi, USDA-Animal and Plant Health Inspection Service; Kelly Patyk, USDA-Animal and Plant Health Inspection Service; Kamina Johnson, USDA-Animal and Plant Health Inspection Service
- 76 Supply Shocks, Futures Prices, and Trader Positions
Joseph Janzen, Montana State University; Nicolas Merener, Universidad Torcuato di Tella
- 77 Value Elicitation for Multiple Quantities of New Differentiated Products Using Non-hypothetical Open-ended Choice Experiments
Maurizio Canavari, University of Bologna; **Rungsaran Wongprawmas**, University of Bologna; Gioacchino Pappalardo, University of Catania; Biagio Pecorino, University of Catania
- 78 What's a Cup Worth?: A Hedonic Analysis of US Retail Coffees Prices
John Hoehn, Michigan State University
- 79 Willingness to Pay for Eco-labeled Fresh Strawberry: Are All Environmentally Friendly Techniques Equal?
Xuqi Chen, University of Florida; Zhifeng Gao, University of Florida; Marilyn Swisher, University of Florida; Lisa House, University of Florida

Food and Agricultural Policy Analysis

- 80 Agricultural Land Value in Poland: Are Farm Subsidies Driving Price Increases?
Gwen Busby, GreenWood Resources; Clark Binkley, GreenWood Resources
- 81 Alternative Control Strategies with Uncertain Trade Barriers for Foot-and-Mouth Disease in Feedlot Operations
Amy Hagerman, USDA-Animal and Plant Health Inspection Service; Amy Delgado, USDA-Animal and Plant Health Inspection Service; Melissa Schoenbaum, USDA-Animal and Plant Health Inspection Service
- 82 Alternative Nutrient Management Policies and the Trade-offs between Agricultural Profits and Water Quality Improvements
Wendong Zhang, The Ohio State University; Elena Irwin, The Ohio State University
- 83 An Empirical Application of a Differential Output Allocation Model for Major US Crops
Manhong Zbu, University of Florida; Gulcan Onel, University of Florida; James Seale, Jr., University of Florida
- 84 Calorie Labeling in Chain Restaurants and Body Weight: Evidence from New York
Brandon Restrepo, US Food and Drug Administration
- 85 Climate Change in the Andes: Predictions, Perceptions and Adaptation by Rice Farmers
Pilar Useche, University of Florida; **Boaz Anglade**, University of Florida
- 86 Commodity Support Payments and Climatic Variability
Anh Nam Tran, University of Missouri; Joseph Cooper, USDA-Economic Research Service



Posters

- 87** Controlling an Imported Disease in California Lettuce: A Dynamic Structural Econometric Model of Short- vs. Long-Term Decision-Making
Christine Carroll, University of California, Davis; Colin Andre Carter, University of California, Davis; C.-Y. Cynthia Lin, University of California, Davis
- 88** Difficulties in Determining the Future of China's Commodity Trade: Policy Issues and Grain Productions
James Hansen, USDA-Economic Research Service; Fred Gale, USDA-Economic Research Service
- 89** Does Farm-County Dependence Explain County Program Payments?: Analysis of Illinois and Kansas Farm-Level Data Based on Student's t-Copula Method
Sanghyo Kim, The Ohio State University; **Carl Zulauf**, The Ohio State University; **Jinsoon Lim**, The Ohio State University
- 90** Effect of Trans Fatty Acids Labeling Rule in the US: Evidence from the US Margarine/Butter Market
Emily Wang, University of Massachusetts; **Hongli Wei**, University of Massachusetts Amherst; Julie Caswell, University of Massachusetts Amherst
- 91** Estimates of the Incidence of Agricultural Subsidies Using Soil - Climatic Regimes
Nathan Hendricks, Kansas State University; **Krishna Pokharel**, Kansas State University
- 92** Food Desert and Childhood Obesity: Quasi-Experimental Evidence from Supermarket Openings and Closures in Arkansas, United States
Di Zeng, University of Arkansas; Michael Thomsen, University of Arkansas; Rodolfo Nayga, University of Arkansas; Heather Rouse, University of Arkansas
- 93** Global Changes in Harvested Area in Corn, Sugarcane and Oilseeds: The Econometric Estimation of the Role of Biofuel Production, Foreign Direct Investment, Income and Population Growth
Luis Pena-Levano, Purdue University; Michele Rasetti, Università Politecnica delle Marche; Xin Zhao, Purdue University; Jeff Opgrand, Purdue University; Mario Renteria Pinon, University of Washington; Grace Rocio Melo, University of Georgia
- 94** How Much Should We Compensate Farmers in Global South to Mitigate Climate Change while Meeting Increasing Food Demand?
Subyun Jung, University of Minnesota
- 95** Impacts of Crop Insurance on US Corn and Soybeans Harvested Acreages
Anh Nam Tran, University of Missouri; Mesbah Motamed, USDA-Economic Research Service
- 96** Institutional Environment: Property Tax Assessment Policy and Farm Property Tax Liability
Matthew Elliott, South Dakota State University; Larry Janssen, South Dakota State University; Lisa Elliott, South Dakota State University
- 97** Noisy Information Signals and Endogenous Preferences for Labeled Attributes
Jura Liaukonyte, Cornell University; Nadia Streletskaya, Cornell University; Harry Kaiser, Cornell University
- 98** One Decade After The Dairy Compact: The Response of Retail Fluid Milk Prices in New England
Jill Ann Fitzsimmons, University of Massachusetts; Luca Cacchiarelli, University of Tuscia; Eric Hoyt, University of Massachusetts Amherst
- 99** Optimal Allocation of Agricultural Water Use in the Southeastern US Using Hydro-Economic Modeling
Lixia He, University of Tennessee; Dayton Lambert, University of Tennessee; Christopher Boyer, University of Tennessee; Christopher Clark, University of Tennessee; Burton English, University of Tennessee; Jamey Menard, University of Tennessee; Thanos Papanicolaou, University of Tennessee
- 100** Pigs on the Levee: [Gun]smoke on the Water
Jason Holderieath, Colorado State University; Chris Sloomaker, USDA-Animal and Plant Health Inspection Service WS NWRC; Aaron Anderson, USDA-Animal and Plant Health Inspection Service; Stephanie Shwiff, USDA-Animal and Plant Health Inspection Service
- 101** Step One to Understanding the Vote-buy Gap: A Look at County Level Outcomes in Recent Ballot Initiatives
Melissa McKendree, Kansas State University; Glynn Tonsor, Kansas State University; Jayson Lusk, Oklahoma State University; Franklin Norwood, Oklahoma State University; Kathleen Brooks, University of Nebraska-Lincoln
- 102** The CRP Choice
Justin Benavidez, Texas A&M University; James Richardson, Texas A&M University

Posters

- 103** The Impact of Agricultural Subsidies on the Corn Market with Farm Heterogeneity and Endogenous Entry and Exit
Stephen Devadoss, University of Idaho; **Mark Gibson**, Washington State University; Jeff Luckstead, University of Arkansas
- 104** The Mirage of Food Deserts: Disparities between Stated and Revealed Results
Haoluan Wang, University of Alberta; Feng Qiu, University of Alberta; Brent Swallow, University of Alberta

Food Safety and Nutrition

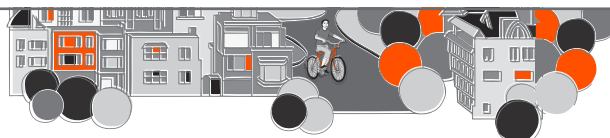
- 105** Assessing Health and Nutritional Consequences of Drinking Water Quality: Evidence from Rural Ethiopia
Evita Hanie Pangaribowo, University of Bonn; **Muhammed Usman**, University of Bonn
- 106** Comparing Forecasting Ability of Demand Systems Using Different Data Sources: the Case of US Meat Demand with Food Safety Recalls
Xia Shang, Kansas State University; Glynn Tonsor, Kansas State University
- 107** Delegation of Monitoring, Transparency, and Reputation
Alexander Saak, International Food Policy Research Institute
- 108** Demand for a Transgenic Good with Nutritional, Medical, and Environmental Qualities
Yoko Saito, Hokkaido University; Hideo Aizaki, Hokkaido University; Hisamitsu Saito, Hokkaido University; Yasutaka Yamamoto, Hokkaido University; Takumi Kondo, Hokkaido University
- 109** Evaluating Spillover Effects of Red Meat and Poultry Recalls across Firms
Veronica Pozo, Utah State University; Ted Schroeder, Kansas State University
- 110** How a Race to the Bottom Can Lead to Obesity
Benjamin Cowan, Washington State University; **Gregmar Galinato**, Washington State University; You Zhou, Washington State University
- 111** Local Economic Conditions and Supplemental Nutrition Assistance Program (SNAP) Participation: A Spatial Panel Analysis
Erik Scherpf, USDA-Economic Research Service; Katie Fitzpatrick, Seattle University; Laura Tiehen, USDA-Economic Research Service

Household and Labor Economics

- 112** Analysis of the Structural Changes in Vietnamese Households' Food Demand: 2010 to 2030
Hoa Hoang, University of Missouri; William Meyers, University of Missouri
- 113** Determinants of Entrepreneurial Intention
Alison Davis, University of Kentucky; Shaheer Burney, University of Kentucky
- 114** Employer-provided Health Insurance Benefit and the Employment Decisions of Documented and Undocumented Farm Workers
Tianyuan Luo, University of Georgia; Cesar Escalante, University of Georgia
- 115** Household Behavior and Livestock Diseases: The Case of Foot-and-Mouth Disease in Tanzania
Umesh Bastola, Washington State University; Thomas Marsh, Washington State University
- 116** Peer Effects in Middle School Students' Test Scores with Accounting for Individual Heterogeneity
Jeffrey Jordan, University of Georgia; **Abdul Munasib**, University of Georgia
- 117** Regional Fresh Fruit and Vegetable Price Indices using Supermarket Scanner Data
Timothy Beatty, University of California, Davis; Samantha Snyder, University of Minnesota

Industrial Org./Supply Chain Management

- 118** Competitive Package Size Decisions
Koichi Yonezawa, Technische Universität München; Timothy Richards, Arizona State University
- 119** Entry of Vendors, Cost Containment, and Participant Access in the Women, Infants and Children Program
Patrick McLaughlin, University of California, Davis; Tina Saitone, University of California, Davis; Richard Sexton, University of California, Davis



Posters

- 120** Firm Performance and Market Structure in the US Food Retailing
Vardges Hovhannisyan, University of Minnesota; Marin Bozic, University of Minnesota
- 121** Persistent Firm Profitability in the US and EU Food Processing Industry
Stefan Hirsch, University of Bonn
- 122** Why Do Manufacturers of Leading National Brands Produce Private Labels for Food Retailers?
Tian Xia, Kansas State University; Xianghong Li, Kansas State University

International Development

- 123** Can Land and Food Entitlement Reduce Conflict: Evidence from Violence Prone Eastern DR Congo
Naureen Fatema, McGill University; *Shabriar Kibriya*, Conflict and Development Center
- 124** Assessing the Impact of Manufacturer Power on Private Brand Success in an Equilibrium Framework
Simba Pasirayi, Arizona State University
- 125** Child Malnutrition in Malawi: Does the Farm Input Subsidy Program Play a Role?
Francis Darko, Purdue University
- 126** Does She Have a Say? The Impact of Livestock Donation and Associated Training on Women's Empowerment in Nepal
Kashi Kafle, University of Illinois at Urbana-Champaign
- 127** Does Time Allocation Really Matter for the Women's Empowerment in Agriculture? An Evaluation of the Women's Empowerment in Agriculture Index WEAI
Sandra Contreras, Kansas State University; Yacob Zereyesus, Kansas State University
- 128** Effect of School Nutritional Campaigns on Biofortified Sweet Potato Adoption and Food Security among Smallholder Farm Households in Ethiopia
Norman Kwikiriza, International Potato Center; Julius Okello, International Potato Center; Wellington Jogo, International Potato Center; *Kennedy Pambo*, University of Nairobi
- 129** Explaining Cropping Systems under Extreme Uncertainty: Evidence from Conflict Prone North Kivu, DR Congo
Naureen Fatema, McGill University; *Shabriar Kibriya*, Conflict and Development Center
- 130** ICTs for Agriculture: Exploring the Impact of a Text-message Based Intervention on Adoption of Blackberry ICM in Ecuador
Vanessa Carrion, Virginia Tech; Jeffrey Alwang, Virginia Tech; George Norton, Virginia Tech; Victor Barrera, Instituto Nacional Autonomo de Investigaciones Agropecuarias
- 131** On the Possibility of Maize Green Revolution in Highlands of Kenya: An Assessment of Emerging Intensive Farming Systems
Rie Muraoka, Michigan State University; Tomoya Matsumoto, National Graduate Institute for Policy Studies; Songqing Jin, Michigan State University; Keijiro Otsuka, National Graduate Institute for Policy Studies
- 132** Potential Spillover Effects of Farmer Field Schools in Sub-Saharan Africa: The Case of Cocoa
Francis Tsiboe, University of Arkansas; Jeff Luckstead, University of Arkansas; Lawton Lanier Nalley, University of Arkansas; Bruce Dixon, University of Arkansas; Jennie Popp, University of Arkansas
- 133** Primary School Attendance and the Perceived Value of Education: Evidence from Tanzania
Christopher Gustafson, University of Nebraska-Lincoln
- 134** Promoting Peru's Smallholder Farmers' Access to Profitable Markets: The Effects of Farmers' Associations and Social Networks
Vania Salas Garcia, Instituto del Perú; Qin Fan, California State University, Fresno
- 135** Sorghum Research and Poverty Reduction under Trade Distortions in Ethiopia
Weldensie Embaye, Kansas State University; Nina Lilja, Kansas State University; Hendricks Nathan, Kansas State University
- 136** South Africa Poultry Production and Trade: A Look at Alternative Domestic and Trade Policies
Nancy Cochrane, USDA-Economic Research Service; James Hansen, USDA-Economic Research Service; Ralph Seeley, USDA-Economic Research Service
- 137** Structural Determinants of Adoption of Artificial Insemination among Livestock Farmers in Pakistan
Muhammad Imran Chaudhry, The Ohio State University; Mario Miranda, The Ohio State University

Posters

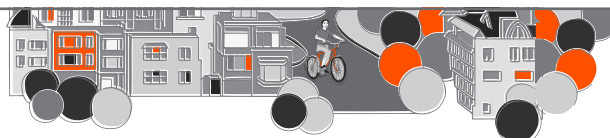
- 138** The Effects of Kenya's 'Smarter' Input Subsidy Program on Smallholder Behavior and Economic Well-being: Do Different Quasi-experimental Approaches Lead to the Same Conclusions?
Nicole Mason, Michigan State University; Ayala Winemsn, Michigan State University; Lilian Kirimi, Tegemeo Institute; David Mather, Michigan State University
- 139** The Role of Foreign Aid and Foreign Direct Investment in Reducing Poverty
El Koudouss EL Mechry, Fordham University; *Evert Van Der Sluis*, South Dakota State University

International Trade

- 140** A Partial Equilibrium of the Grain Sorghum Markets in US, Mexico, and Japan
Kazuyoshi Ishida, Texas Tech University
- 141** Agricultural Commodity Prices and Exchange Rates under Structural Change
Patrick Hatzenbuehler, Purdue University; Philip Abbott, Purdue University; Kenneth Foster, Purdue University
- 142** An Empirical Investigation of the Relationship between the Quality of Food and the Direction of Trade
Sandro Steinbach, ETH Zurich
- 143** Assessing the Impact of Competition from Mexico on the US Strawberry Industry
Dong Hee Suh, University of Florida; Zhengfei Guan, University of Florida; Hayk Khachatryan, University of Florida
- 144** Changes in Technology Use in the Beef Industry: Welfare Analysis and Trade Implications
Lia Nogueira-Rodriguez, University of Nebraska-Lincoln; *Kathleen Brooks*, University of Nebraska-Lincoln; David Bullock, University of Illinois at Urbana-Champaign
- 145** Estimating the Trade Duration of Kazakhstan's Wheat Exports
Nizami Imamverdiyev, IAMO - Agricultural Markets, Marketing and World Agricultural Trade; *Sven Anders*, University of Alberta
- 146** Effects of Lower Energy Prices on Brazilian Agriculture and Associated Land Use
Constanza Valdes, USDA-Economic Research Service; Kim Hjort, Economic Analysis Systems; Ralph Seeley, USDA-Economic Research Service; *Andrew Muhammad*, USDA-Economic Research Service
- 147** Impacts of the Food Safety Regulations on Trade Flows: An Application to the Hazelnut and Almonds Industries
Muhammet Sisman, Auburn University
- 148** Terms of Trade Volatility and Persistence to Shocks in the United States
Mahdi Asgari, University of Kentucky; Michael Reed, University of Kentucky
- 149** The Analysis of the Inter-Regional Trade and Investment Flows: The Aggregated Net Trade Level in the Spanish Provinces
Luis Pena-Levano, Purdue University; Francisco Scott, Purdue University; Steffen Becker, Ruhr Universität Bochum; *Adenola Osinubi*, The University of Georgia; Francisco Scott, Purdue University; Matthew Rachal, Purdue University; William Pena-Levano, Universidad Inca Garcilaso de la Vega; Priscilla Pena-Levano, Universidad Mayor de San Marcos; Jorge Diaz, Universidad Rey Juan Carlos
- 151** Trade Costs of Pests and Pathogens: the Case of Foot-and-Mouth Disease
Umesh Bastola, Washington State University; Thomas Marsh, Washington State University

Natural Resource Economics

- 152** A Socio Economic Assessment of Yield Increasing GM Wheat in Germany
Philipp Wree, Technische Universität München; Johannes Sauer, Technical University Munich
- 153** A Spatial Bioeconomic Model of Invasive Insect Diffusion and Control: The Case of Spotted Wing Drosophila in the United States
Xiaoli Fan, Cornell University; Shady Atallah, Purdue University; Miguel Gomez, Cornell University
- 154** An Economic Approach to Measuring the Impacts of Higher Temperatures on Wildfire Size in the Western United States
Dallas Wood, North Carolina State University
- 156** Economic and Environmental Impacts of Expanding Irrigation in the Southeast
Jeffrey Mullen, University of Georgia; Aaron Bose, Sun Trust Bank; Nicholas Magnan, University of Georgia



Posters

- 157** Economics of Precision Conservation: The Case of Dairy Manure Management In Ohio
Edward Osei, Tarleton State University; Huijun Li, Ranger College
- 158** Effects of Groundwater Management on Groundwater Use and Production Efficiency in North China
Qiuqiong Huang, University of Arkansas
- 159** Embedding an Individual-based Model of Wildlife Disturbance in an Agent-based Model of Outdoor Recreation
Shady Atallah, Purdue University; Alexander Cohen, Purdue University; Patrick Zollner, Purdue University
- 160** How Well is the Relationship Between Poaching and Education Understood?
Biswo Poudel, Kathmandu University; *Krishna Paudel*, Louisiana State University
- 161** Impact of On-farm Water Conservation Practices on Groundwater Use in Arkansas
Ying Xu, University of Arkansas; *Qiuqiong Huang*, University of Arkansas
- 162** Infant Mortality: Climate Factors Surrounding Death
Peter Han, University of Wisconsin; Jeremy Foltz, University of Wisconsin
- 163** New Theoretical Framework for Analysis of the Effect of Crop Insurance on Fertilizer Use: Two-Period Discrete Model
Iuliia Protopop, University of Nebraska-Lincoln; Karina Schoengold, University of Nebraska-Lincoln; Cory Walters, University of Nebraska-Lincoln
- 164** Occurrence vs. Severity: Optimal Forest Management and Rotation Length in the Presence of Fire Risk in Florida
Kelly Grogan, University of Florida
- 165** The Effect of the Unconventional Energy Boom on Schooling Decisions in the US
Na Zuo, University of Kentucky; Jack Schieffer, University of Kentucky
- 166** Water-efficient Irrigation Technology Adoption in Punjab
Juan Pablo Sesmero, Purdue University; Sheng Homan, Purdue University; Molly Van Dopp, Purdue University; Taisha Venort, Purdue University

Production Economics

- 168** Developing Decision Criteria for Soil Salinity Management Options on Cropland: A Case Study in Southeast North Dakota
Nazea Khan Chowdhury, North Dakota State University; David Roberts, North Dakota State University; David Clay, South Dakota State University; Thomas DeSutter, North Dakota State University
- 169** Economic and Financial Determinants of Firm Bankruptcy: Evidence from the French Food Industry
Lilia Aleksanyan, Paris School of Economics
- 170** Economic Forces Affecting Louisiana Agriculture Production through Space and Time
John Westra, Louisiana State University; Hiuzhen Niu, Louisiana State University; *James Fannin*, Louisiana State University
- 171** Economic Impact of Reducing Bovine Respiratory Disease in United States Beef Cattle Feedlots
Kamina Johnson, USDA-Animal and Plant Health Inspection Service; Dustin Pendell, Colorado State University
- 172** Effects of Joint Primal-dual Estimation and Concavity Restrictions on Parameter Estimates of US Agricultural Production
Alejandro Plastina, Iowa State University; Sergio Lence, Iowa State University
- 173** Endogenizing Sustainability in US Corn Production: A Cost Function Analysis
Fengxia Dong, University of Wisconsin; *Paul Mitchell*, University of Wisconsin
- 174** Evaluating Cost of Production of Maine Dairy Farms Using an On-Site Interview
Dylan Bouchard, University of Maine; Xuan Chen, University of Maine; Gary Anderson, University of Maine; Richard Kersbergen, University of Maine; George Criner, University of Maine
- 175** Is Irrigated Farm is More Efficient than Non-irrigated Non-tillage Farm and Non-irrigated Conventional Farm for a Sample of Kansas Corn Farmer?
Rulianda Wibowo, Kansas State University; Allen Featherstone, Kansas State University
- 176** Nevada Ranchers Attitudes Toward the Trichomoniasis Vaccine
Florina Salaghe, University of Nevada, Reno; Thomas Harris, University of Nevada, Reno

Posters

- 177 Non-Neutral Marginal Research Costs and Induced Innovation Hypothesis
Daegoon Lee, Washington State University; Benjamin Cowan, Washington State University; C. Richard Shumway, Washington State University
- 178 Producer Willingness to Adopt GM Rice: A Multi-Country Assessment
Alvaro Durand-Morat, University of Arkansas; Eric Wailes, University of Arkansas; Mohammad Alam, Bangladesh Agricultural University; Francis Mwaijande, Mzumbe University; Francis Tsiboe, University of Arkansas
- 179 Technical Efficiency and Adoption of Conservation Practices in Iowa Soybean Production
Alejandro Plastina, Iowa State University; *Fangge Liu*, Iowa State University
- 180 The Information Value of Decadal Climate Variability and Adaptation: A Case in the Missouri River Basin
Pei Huang, Texas A&M University; Bruce McCarl, Texas A&M University

Productivity Analysis and Emerging Technologies

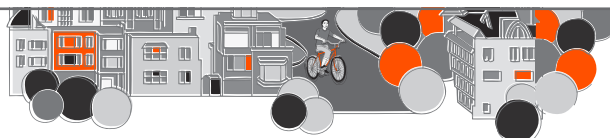
- 181 Estimating the Role of Technology in Converting to Organic Dairy Production
Tristan Skolrud, Washington State University
- 182 Potential Welfare Effects of Soy-Based Mariculture Feed
Subir Bairagi, University of Nebraska-Lincoln; Richard Perrin, University of Nebraska-Lincoln; Lilyan Fulginiti, University of Nebraska-Lincoln
- 183 Rootworm Resistance in US Corn Fields: A Structural Model of Insect Control Decisions
Seth Wechsler, USDA-Economic Research Service
- 184 Testing for Complementarity: Glyphosate Tolerant Soybeans and Conservation Tillage
Edward Perry, Iowa State University; GianCarlo Moschini, Iowa State University; David Hennessy, Iowa State University

Research Methods/Econometrics/Stats

- 185 Developing Forecasting Model of Vegetable Demand based on a Big Data Processing
Do-il Yoo, Chungbuk National University
- 186 Evaluation of an Alternative Attribute Non-attendance Elicitation Format
Yuan Yuan, Virginia Tech; Wen You, Virginia Tech; Kevin Boyle, Virginia Tech; Christopher Parmeter, University of Miami
- 187 Improving a Measure of Women's Empowerment: Cognitively Pretesting the WEAI in Uganda and Bangladesh
Chiara Kovarik, International Food Policy Research Institute; Kathryn Sproule, International Food Policy Research Institute; Hazel Malapit, International Food Policy Research Institute
- 188 Is Money Neutral for Agriculture?
Jeffrey Dorfman, University of Georgia
- 189 Is Price Volatility of Mexican Agricultural Products Increasing? An Application of an ARCH with Trend Model
Santiago Guerrero, Banco de Mexico; *Miriam Juarez-Torres*, Banco de Mexico
- 190 The Role of Data Frequency in Stationarity Testing
Xuedong Wu, University of Georgia; Jeffrey Dorfman, University of Georgia; Berna Karali, University of Georgia

Resource and Environmental Policy Analysis

- 191 A Hedonic Analysis of the US Frozen Seafood Market
Steven Vickner, Wilmington College
- 192 A Techno-Economic Analysis of the Corn Stover to Aviation Biofuels Pathway
Amanda Bittner, Purdue University; Wallace Tyner, Purdue University; *Xin Zhao*, Purdue University
- 193 An Empirical Structural Model of Productivity and the CRP Land Use Decision
Heesun Jang, University of Wisconsin; Xiaodong Du, University of Wisconsin; Xiaodong Du, University of Wisconsin
- 194 Conservation Program Contract Modification: Evidence from USDA's Environmental Quality Incentives Program
Steven Wallander, USDA-Economic Research Service; Alexandra Hill, University of California, Davis; Roger Claassen, USDA-Economic Research Service



Posters

- 195** Disruptive Policy Impacts on Biodiesel Investment: The Third Leg in 3-T Policy
Shen Liu, University of Georgia; Gregory Colson, University of Georgia; Michael Wetzstein, Purdue University
- 196** Energy Price Uncertainty and Global Land Use
Alla Golub, Purdue University; Yongyang Cai, Hoover Institution, Stanford University; Thomas Hertel, Purdue University; Jevgenijs Steinbuks, World Bank
- 197** Estimating the Ecological and Economic Impact of Urban Stormwater Runoff
Kelly Miller, University of Massachusetts Amherst
- 198** Land Sharing Versus Land Sparing to Protect Water from Pesticide Pollution?
Elsa Martin, CESAER, INRA-AgroSup Dijon; Sophie Legras, CESAER, INRA-AgroSup Dijon; Virginie Piguet, CESAER, INRA-AgroSup Dijon
- 199** Policy Tools for Managing Biological Pollution Risks from Trade
Carson Reeling, Michigan State University; Richard Horan, Michigan State University
- 200** Regional Irrigation Management with Conjunctive Surface and Groundwater Use
Kent Kovacs, University of Arkansas
- 201** Short- and Long-Run Analysis of Factors Affecting Electricity Consumption in Sub-Saharan Africa
Nyakundi Michieka, California State University, Bakersfield
- 202** Subsidies in Conflict and the “War of Attrition:” Does Ethanol Plant Location Cause Early Exits in the Conservation Reserve Program?
Thomas Krumel, Jr., University of Minnesota; Steven Wallander, USDA-Economic Research Service
- 203** Subsidizing Carbon Sequestration via Forestry in Maryland: A Benefit-Cost Assessment
Rachel Hettich, Purdue University; *Philip Abbott*, Purdue University
- 204** Testing the Effect of New Neighboring Open Space on Development
Charles Towe, University of Connecticut
- 205** The Economic Performance and the Potential for Self Governance in the Fishery
Sergio Colin-Castillo, Centro de Estudios Socio Economicos (CISE); Richard Woodward, Texas A&M University
- 206** The Potential Role for Nitrogen Compliance in Mitigating Gulf Hypoxia
Marc Ribaud, USDA-Economic Research Service; Nigel Key, USDA-Economic Research Service; Stacy Sneeringer, USDA-Economic Research Service
- 207** The Welfare Effects of Opening to Foreign Direct Investment in Polluting Sectors
Gregmar Galinato, Washington State University; *Xin Zhao*, Washington State University
- 208** VMT Taxes: The Impacts of Switching from a Volumetric Fuel Tax to a Mileage Tax
Eric O’Rear, Purdue University; Kemal Sarica, Purdue University; *Wallace Tyner*, Purdue University
- 209** Welfare Implications of the Renewable Fuel Standard with a Revenue Neutral Carbon Tax
Tristan Skolrud, Washington State University; Gregmar Galinato, Washington State University

Risk and Uncertainty

- 210** Do Continuing Education Courses Change Grower Behavior? Powdery Mildew and California Grape Growers
Olena Sambucci, University of California, Davis; Travis Lybbert, University of California, Davis
- 211** Estimation of Yield Densities: A Bayesian Nonparametric Perspective
Francis Annan, Columbia University; *Yang Wang*, North Carolina State University
- 212** Investment Decisions in Small Ethanol Plant under Risk and Uncertainty
Kassu Wamisho, North Dakota State University; David Ripplinger, North Dakota State University
- 213** Labor Responses to Rainfall Variability in Rural Ethiopia: A Model of Migration, Off-farm Activities and Remittance
Jianfeng Gao, Virginia Tech; Bradford Mills, Virginia Tech
- 214** Learning about a Moving Target in Resource Management: Optimal Bayesian Disease Control
Matthew MacLachlan, University of California, Davis; Michael Springborn, University of California, Davis; Paul Fackler, North Carolina State University

Posters

- 215** Mitigation Index Insurance for Developing Countries: Insure the Loss or Insure the Signal?
Yiting Li, The Ohio State University; Mario Miranda, The Ohio State University
- 216** Risk Premium Under Price and Yield Uncertainty
Sankalp Sharma, University of Nebraska-Lincoln; Karina Schoengold, University of Nebraska-Lincoln
- 217** The Effects of Extreme Climatic Events on Dairy Farmers' Risk Preferences
Stephane Couture, INRA; *Christophe Bontemps*, Toulouse School of Economics -INRA
- 218** The Ground-Level Ozone-Related Social Welfare Impact of Climate Change in the US
Jin Huang, Abt Associates Inc.; Anna Belova, Abt Associates Inc.; Jonathan Dorn, Abt Associates Inc.; Frank Divita, Abt Associates Inc.

Rural/Community Development

- 219** Does Social Capital Explain Small Business Resilience After a Natural Disaster?
Ariana Torres, Purdue University; Maria Marshall, Purdue University
- 220** Estimating Agriculture's Contribution to the Arkansas Economy over Time
Leah English, University of Arkansas; Jennie Popp, University of Arkansas; Wayne Miller, University of Arkansas
- 221** Highway Infrastructure Investment and Induced Vehicle Emissions
You Zhou, Washington State University
- 222** Individual and Contextual Factors Explaining Latino Entrepreneurship in Rural Communities of the Midwest
Andrick Payen Diaz De La Vega, University of Missouri; Corinne Valdivia, University of Missouri; Lisa Flores, University of Missouri
- 223** Measuring Vulnerability to Poverty Allowing for Agricultural and Non-Agricultural Risks: Evidence from Tanzanian Household Data
Ryosuke Inoue, The University of Tokyo; *Toru Nakajima*, The University of Tokyo; Taro Takahashi, The University of Tokyo
- 224** Response to Economic Shock: Impacts of Rurality and the Great Recession on Suicide Rates in the United States
Danielle Carriere, Purdue University
- 225** The Role of US Certifiers in Organic Hotspot Formation
Ioana Marasteanu, Food and Drug Administration; Edward Jaenicke, The Pennsylvania State University
- 226** University Research Productivity and its Impact on the Regional Agricultural Economy: The Case of Colorado State University and the Colorado Economy
Yoo Hwan Lee, Colorado State University; Gregory Graff, Colorado State University

Teaching, Communication, and Extension

- 227** Knowledge and Adoption of Best Management Practices to Address Water Quality Issues
Michael Black, University of Arkansas; Jennie Popp, University of Arkansas; Andrew Sharpley, University of Arkansas; Mike Daniels, University of Arkansas

