

**Poultry Situation and
Outlook: 2003-04
Broilers, Turkeys and Eggs**

John D. Lawrence

Extension Livestock Economist

Iowa State University

**Presented at the American Agricultural Economics
Association Meetings, Montreal, July 28, 2003,**

Factors Shaping Outlook

- **Supply**
 - Tighter margins
 - Foreign animal disease
- **Demand**
 - Exports and quotas
 - Domestic consumption

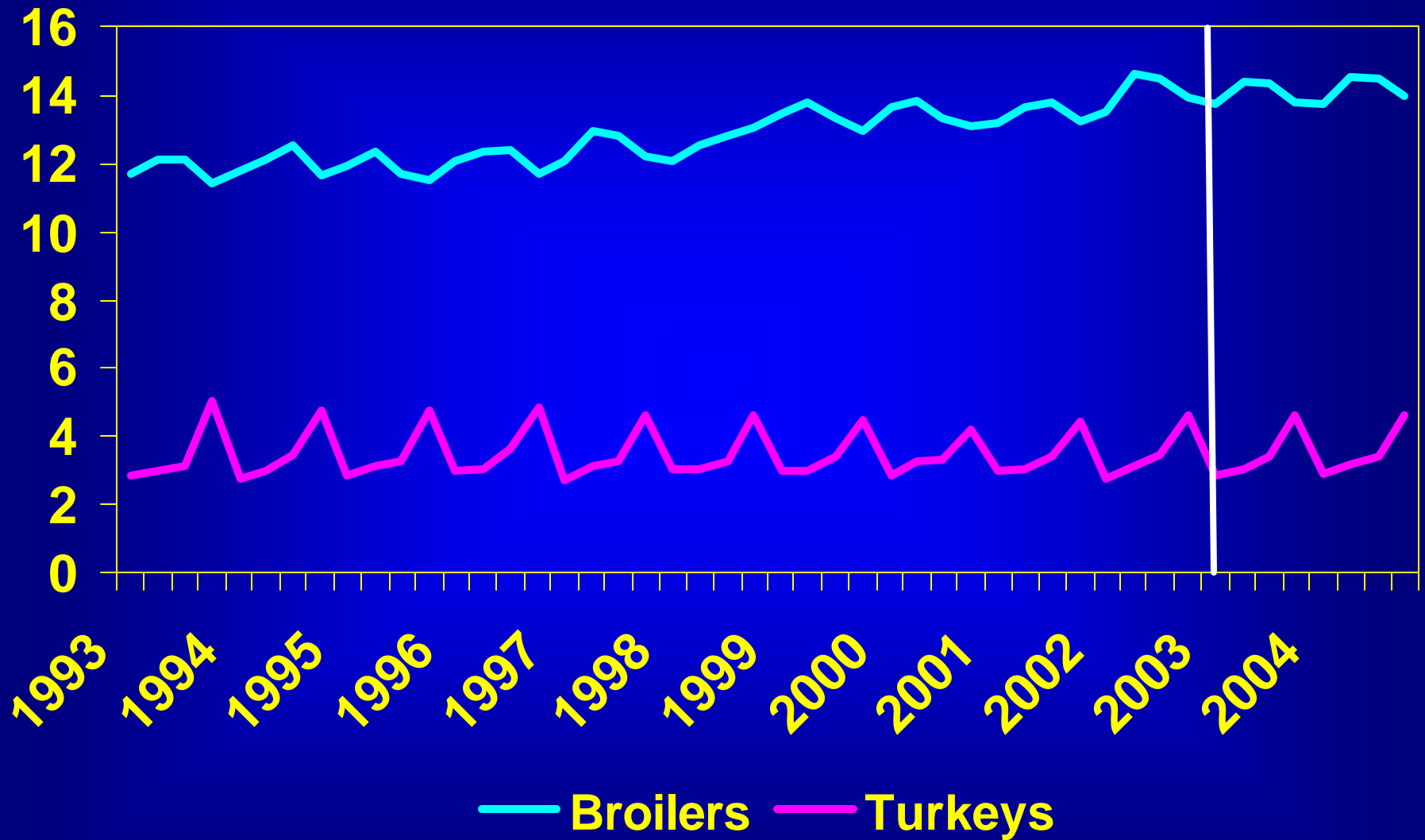
Supply

- **Tighter margins**
 - **Broilers: positive, but declining**
 - **Turkeys: some negative, and declining**
 - **Eggs: several negative, but stable**
- **Disease problems**
 - **Exotic Newcastle Disease**
 - **Avian Influenza**
 - **Some trade restrictions by state**

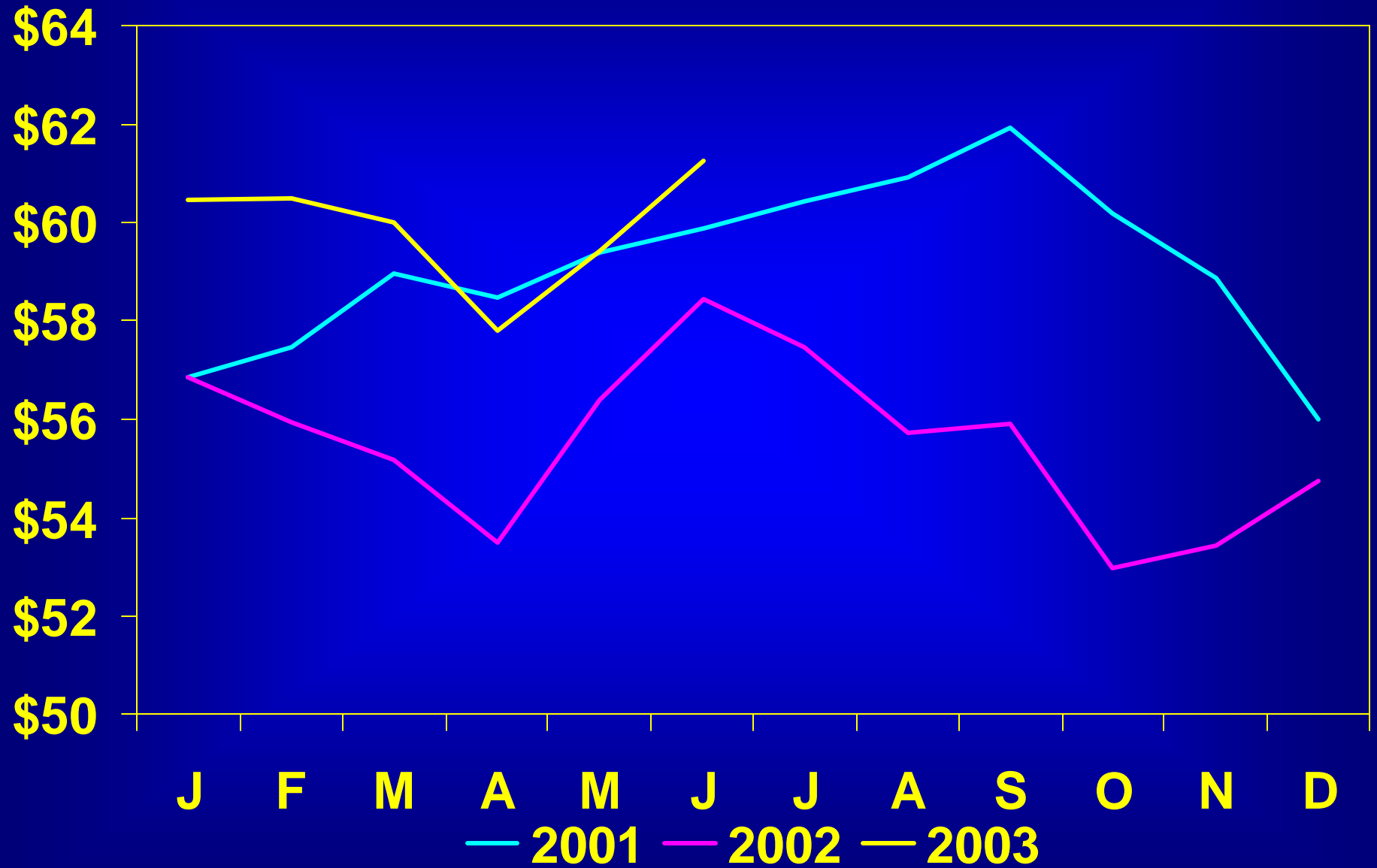
Demand

- **Domestic consumption**
 - Egg down one egg
 - Broilers on trend upward
 - Turkeys stable
- **Exports**
 - Broilers: Russia down 33% in 2002 and new quota in 2003
 - Turkeys: Down 10% in 2002

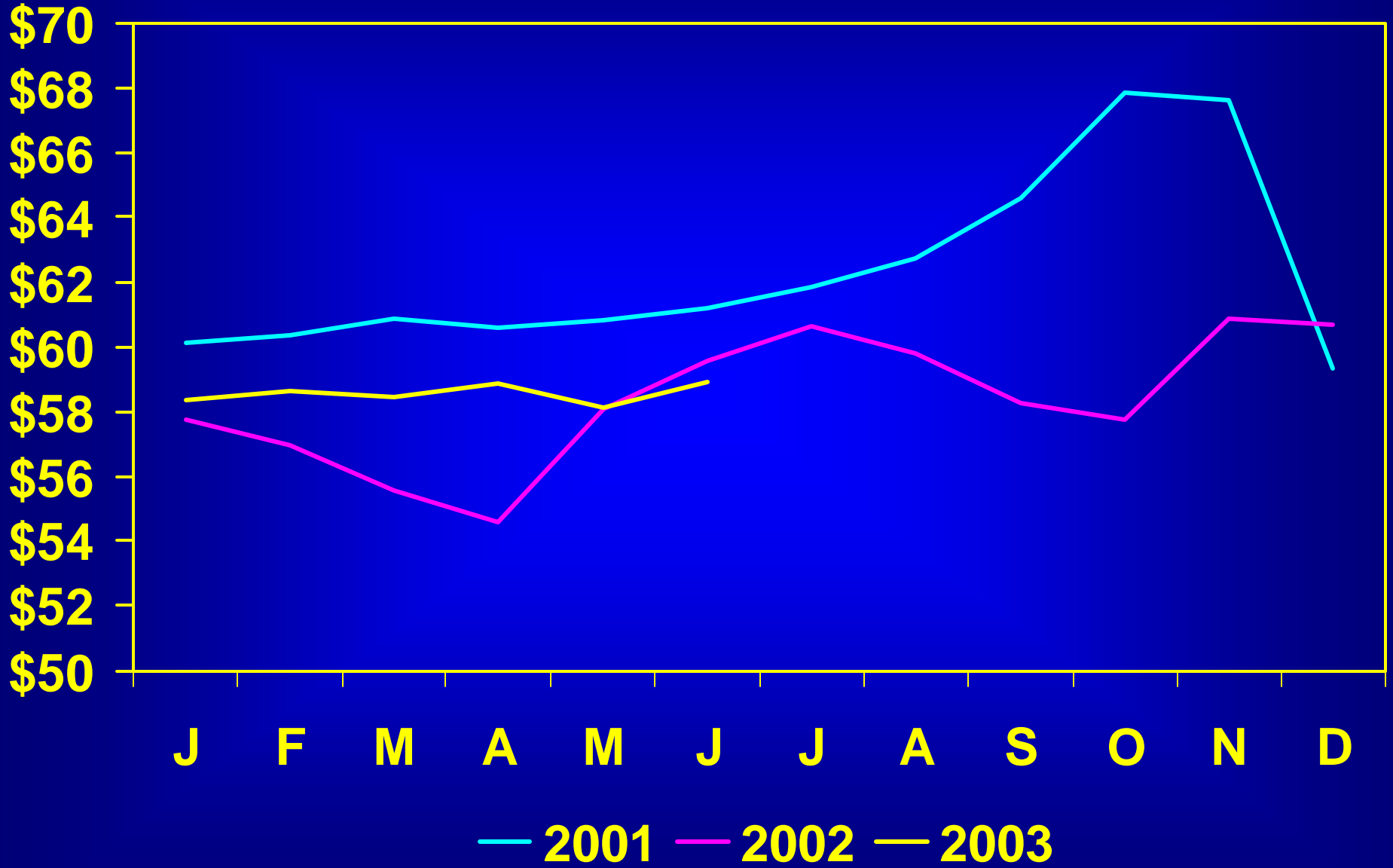
Broiler and Turkey Per Capita Consumption



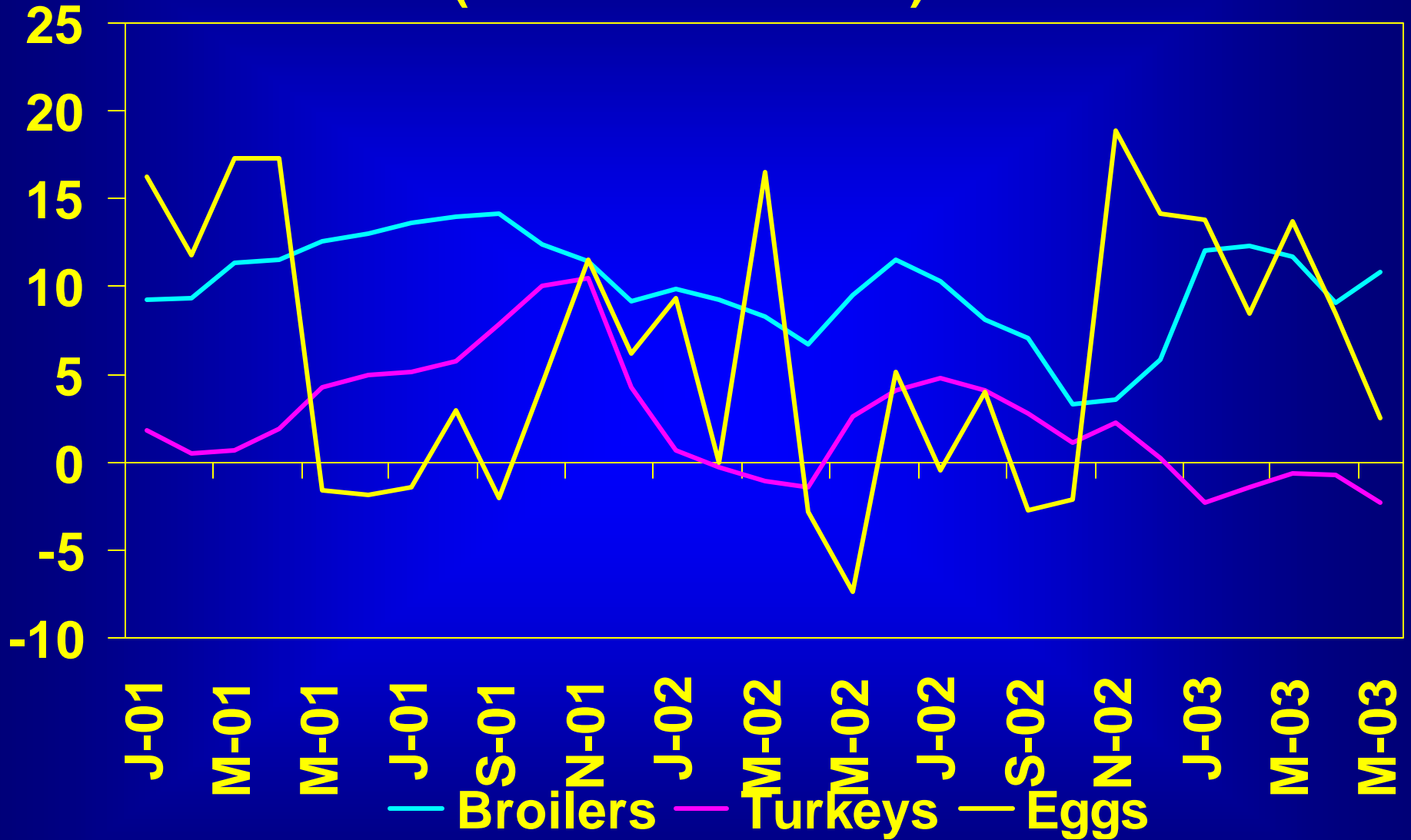
Wholesale 12 City Broiler Meat Prices, RTC



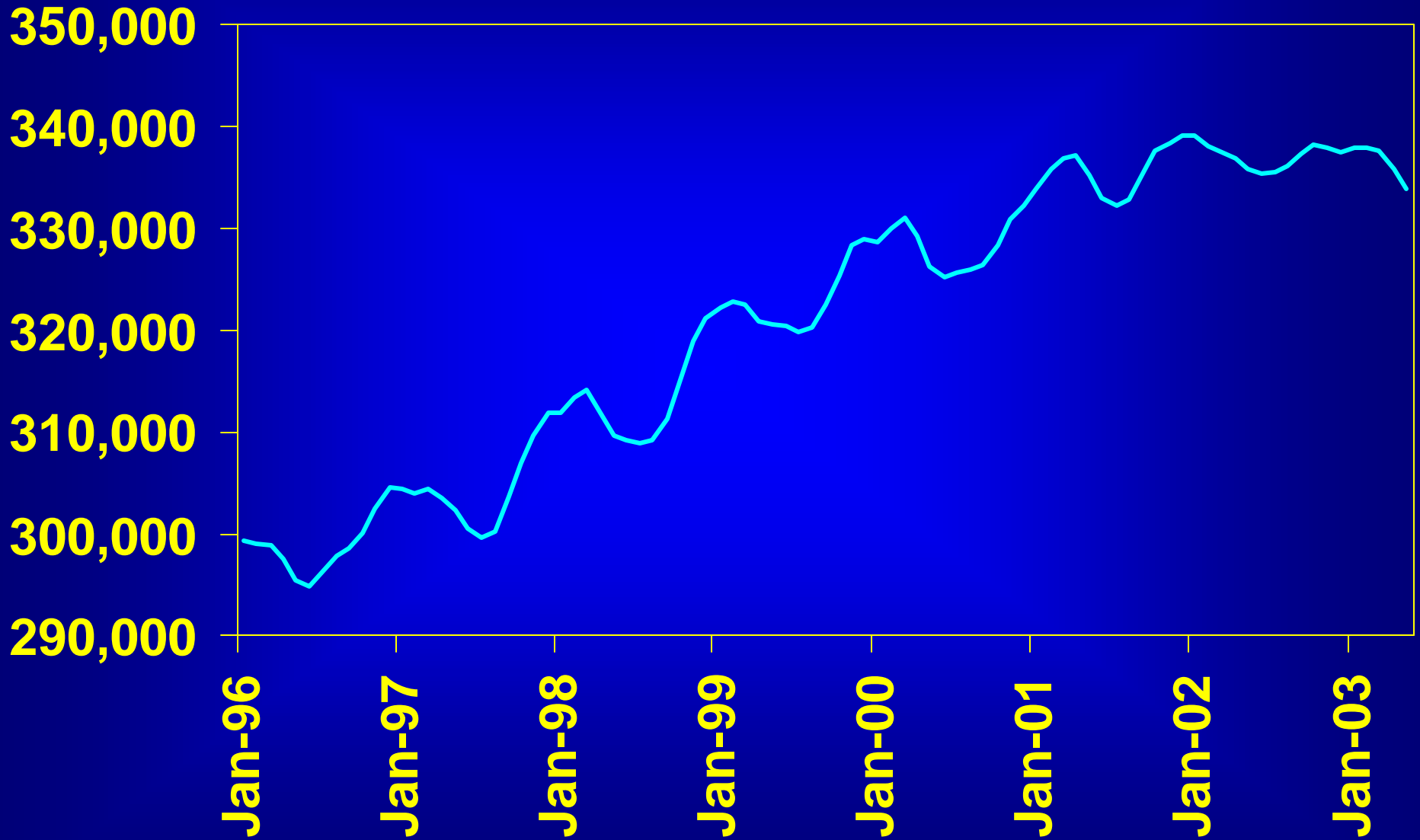
Tom Turkey Prices



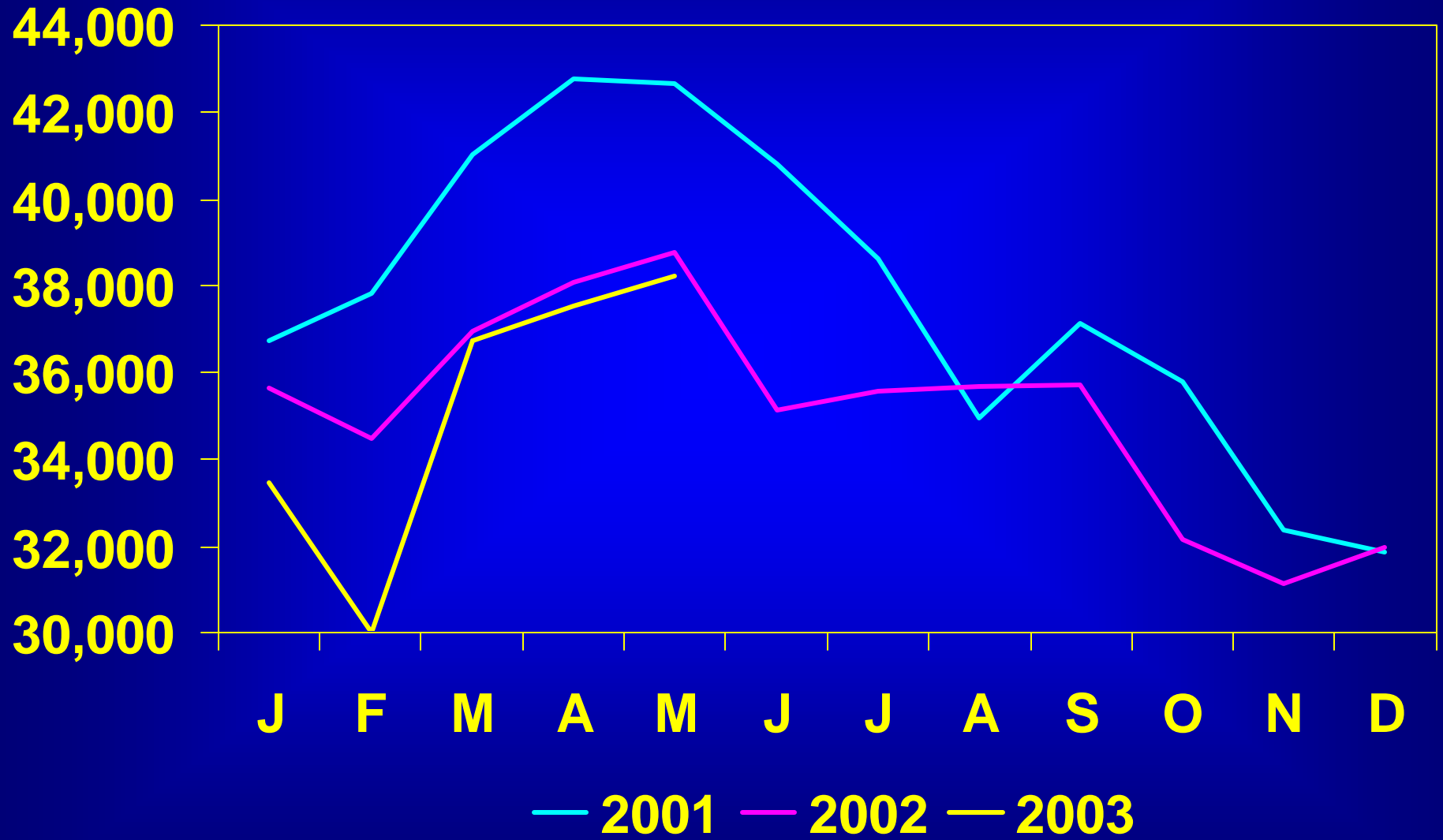
Net Return Before Interest & Overhead (Cents/lb or Dozen)



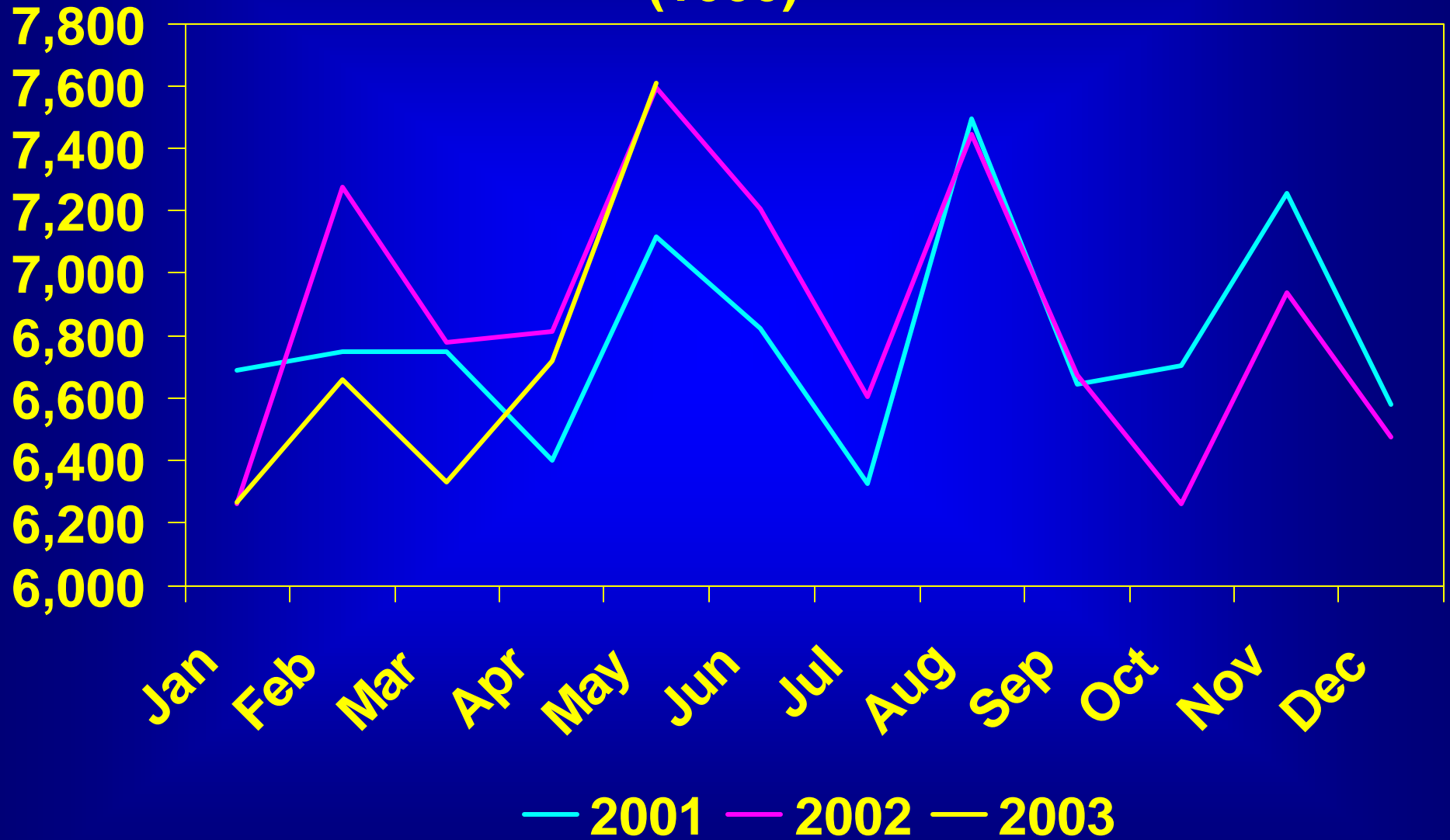
Layer Inventory, 1996-2003 (1000)



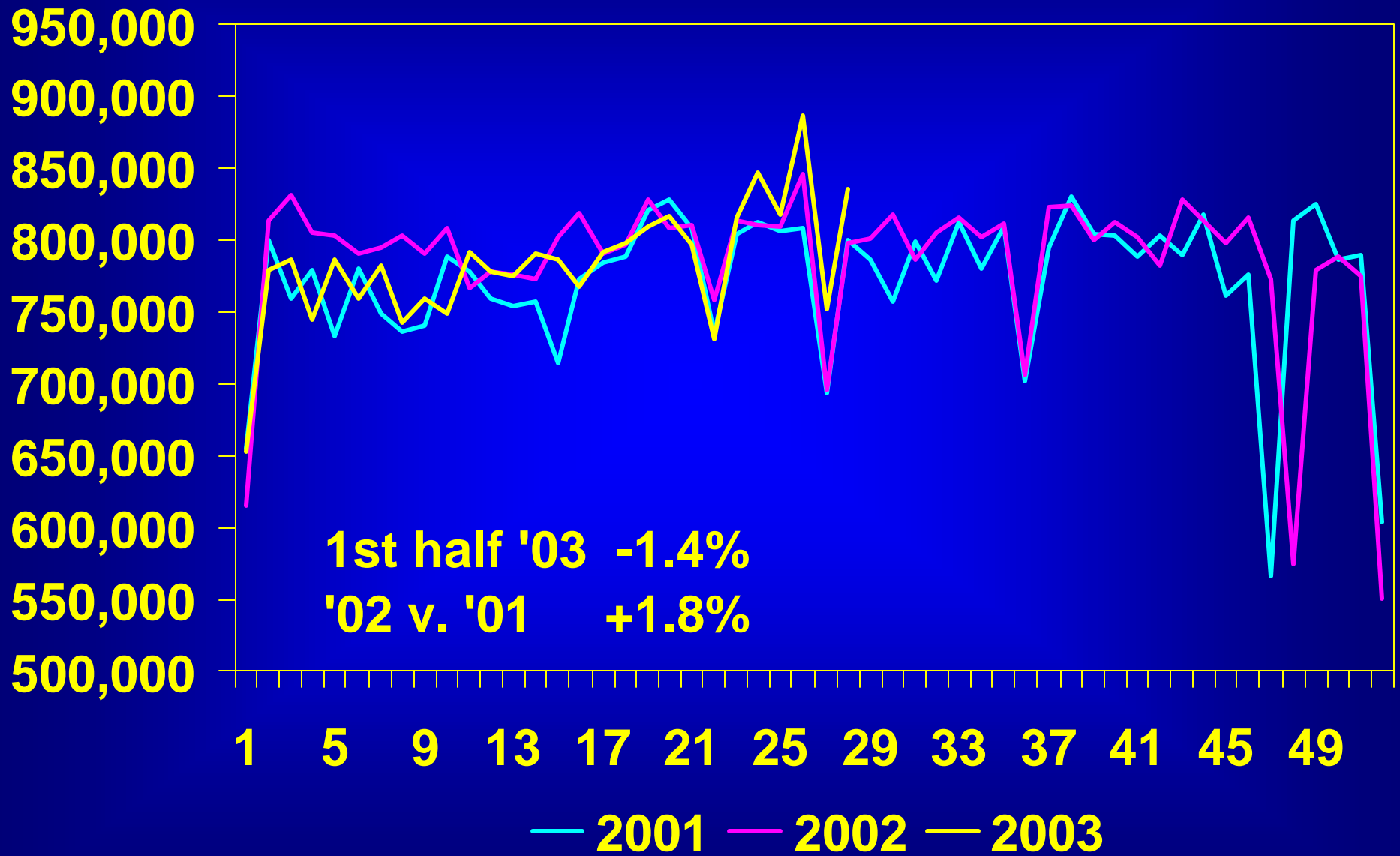
Egg-Type Chicks Hatched (1000)



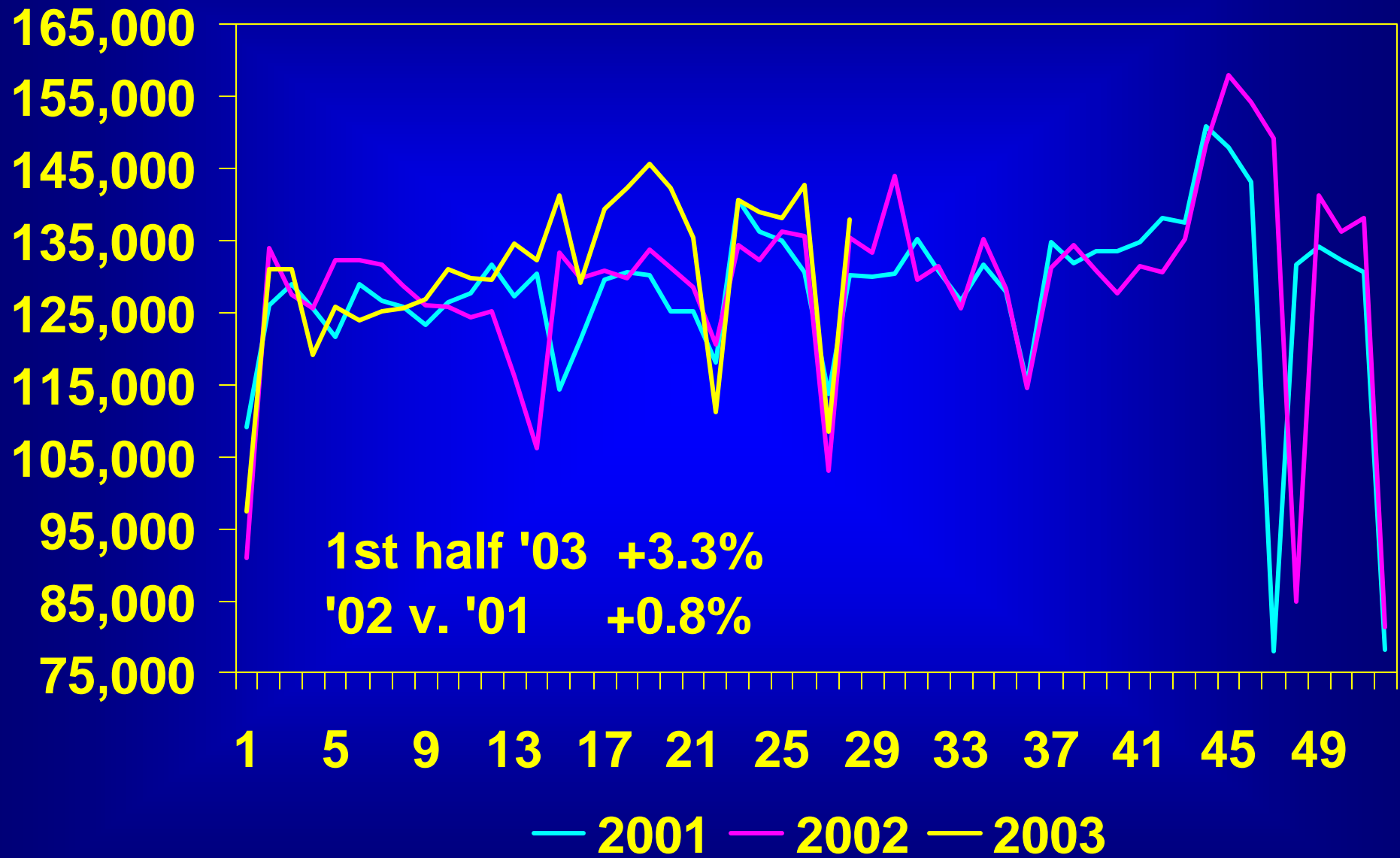
Intended Placement Broiler-Type Chicks (1000)



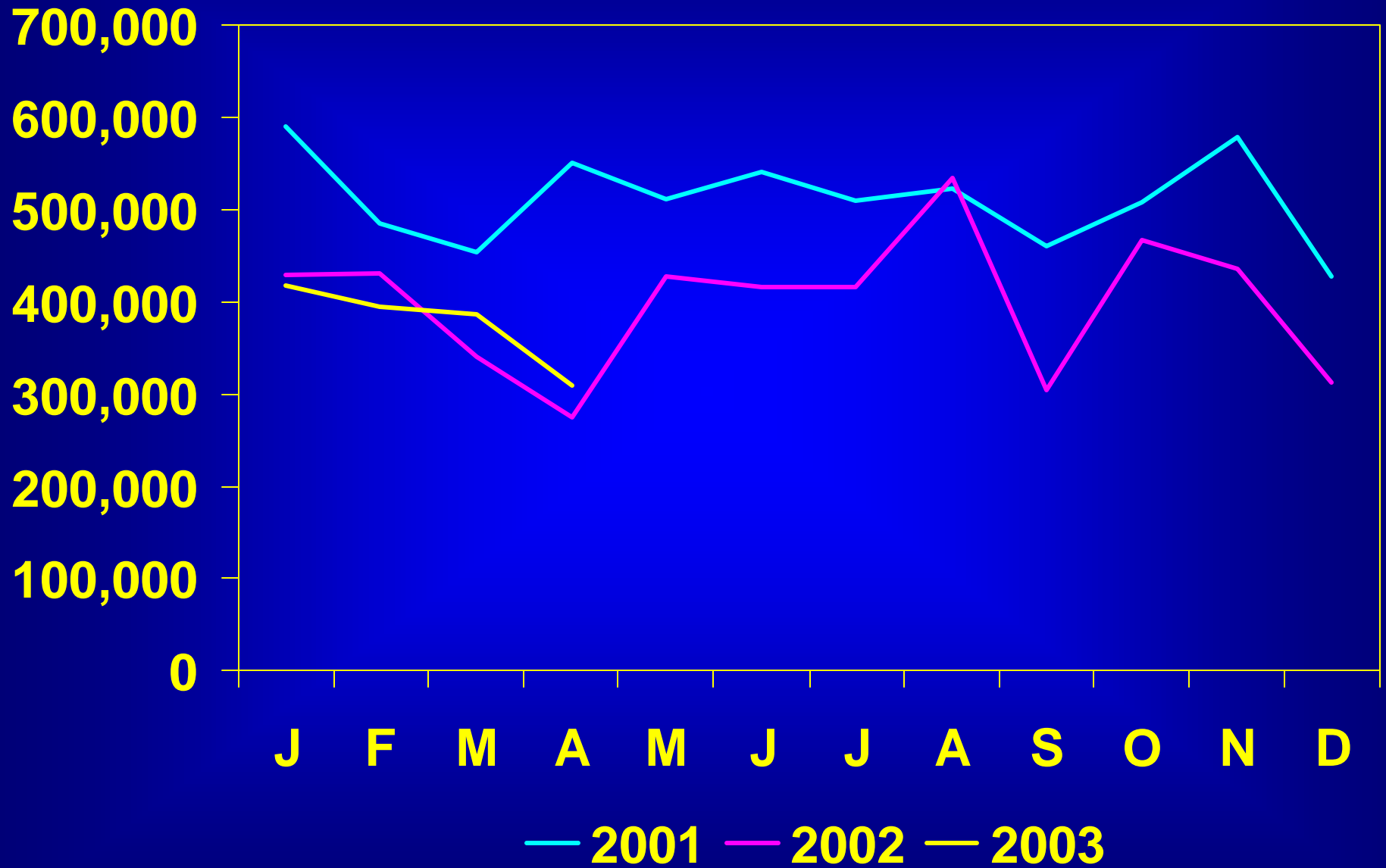
Weekly Broiler Production (1000)



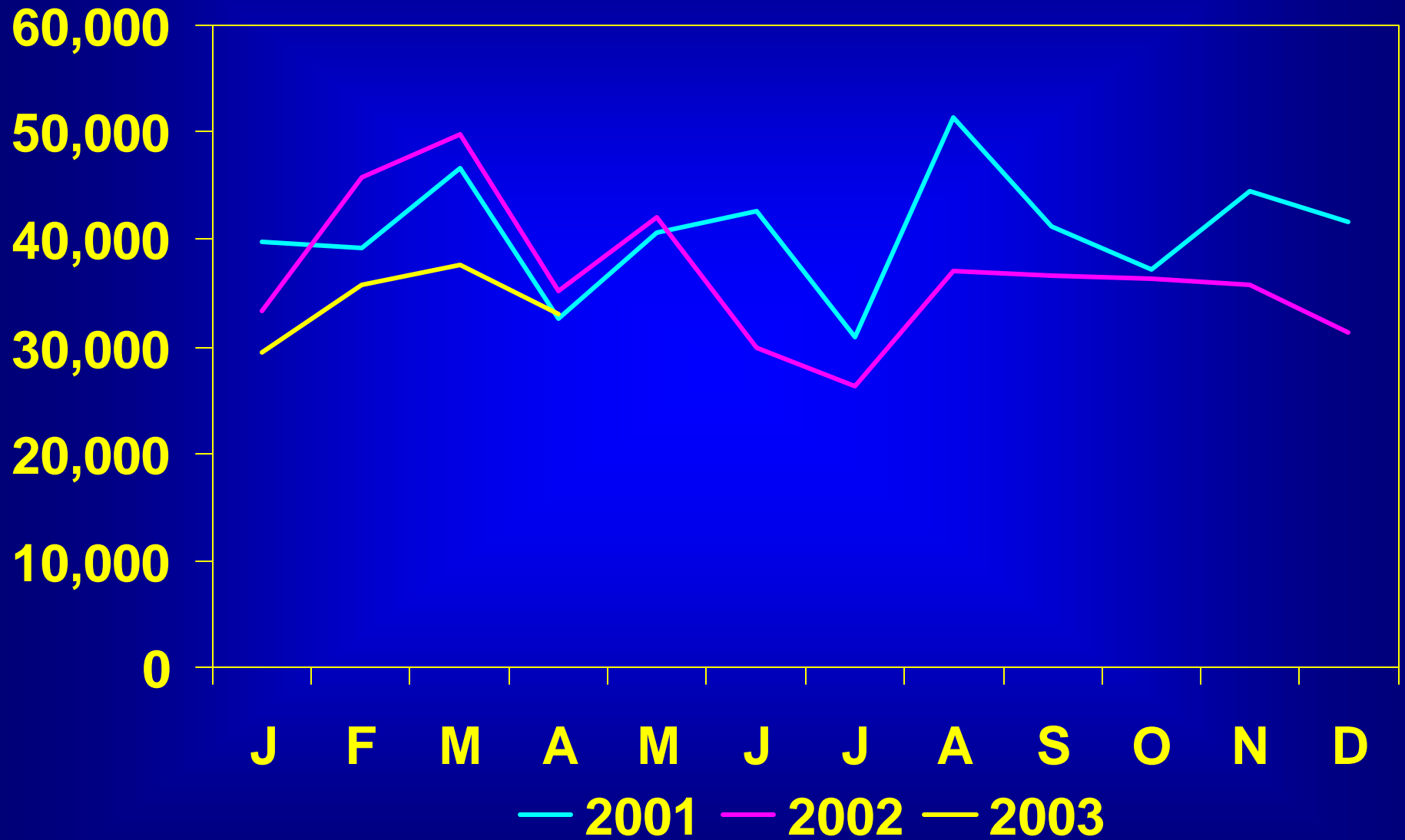
Weekly Turkey Production (1000)



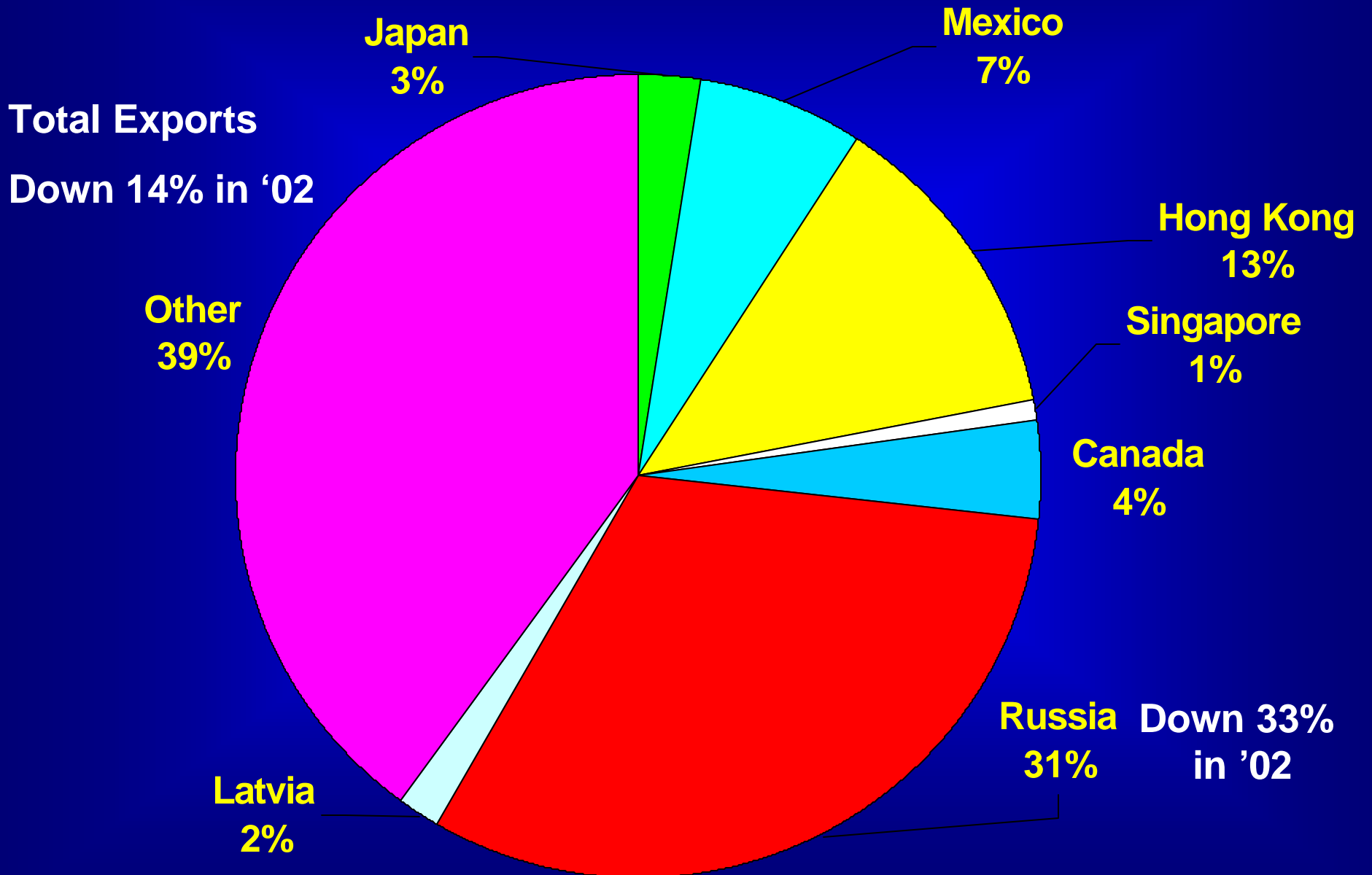
Broiler Exports (RTC 1000 Lbs)



Turkey Exports (RTC 1000 Lbs)

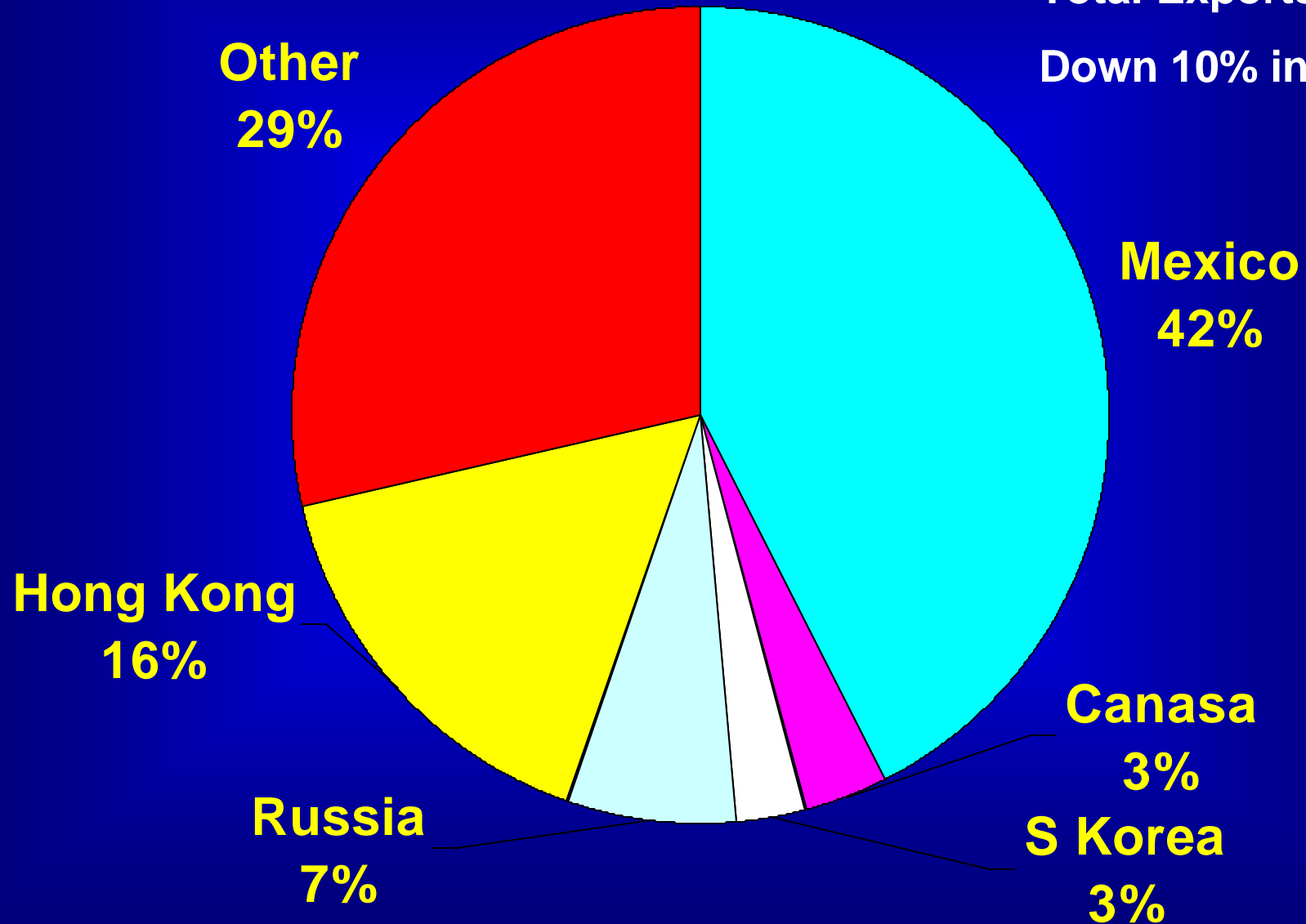


Broiler Exports 2002

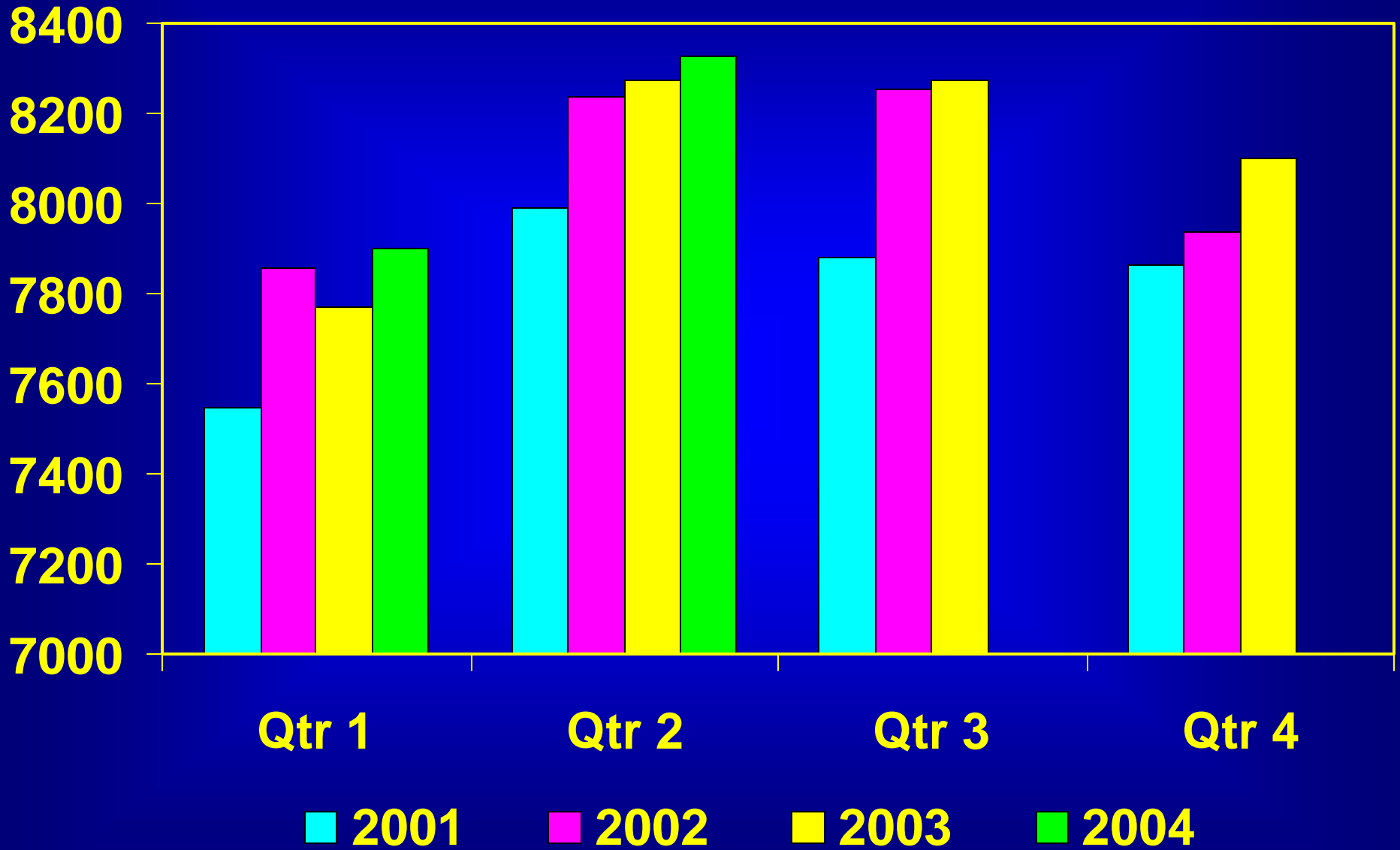


Turkey Exports 2002

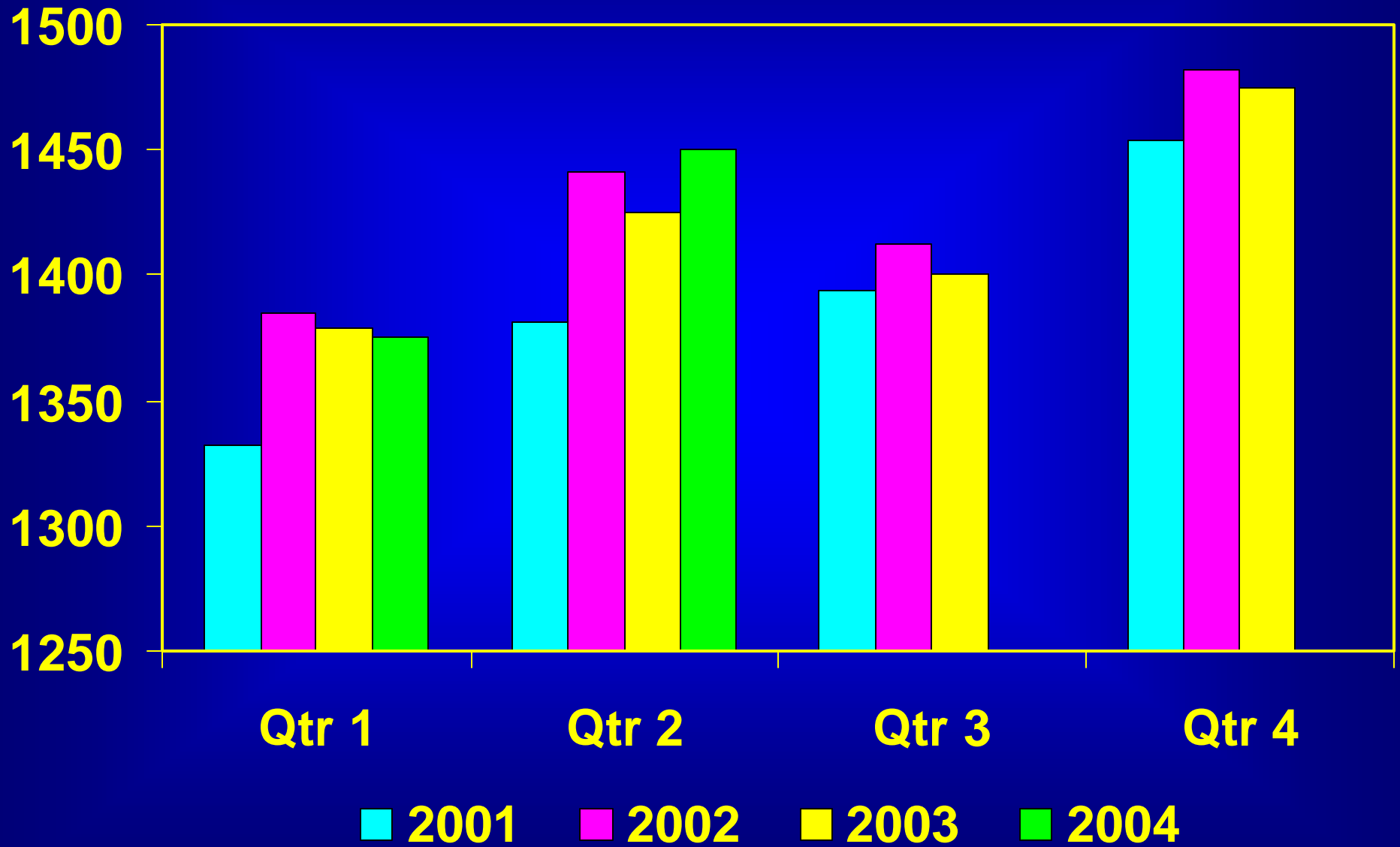
Total Exports
Down 10% in '02



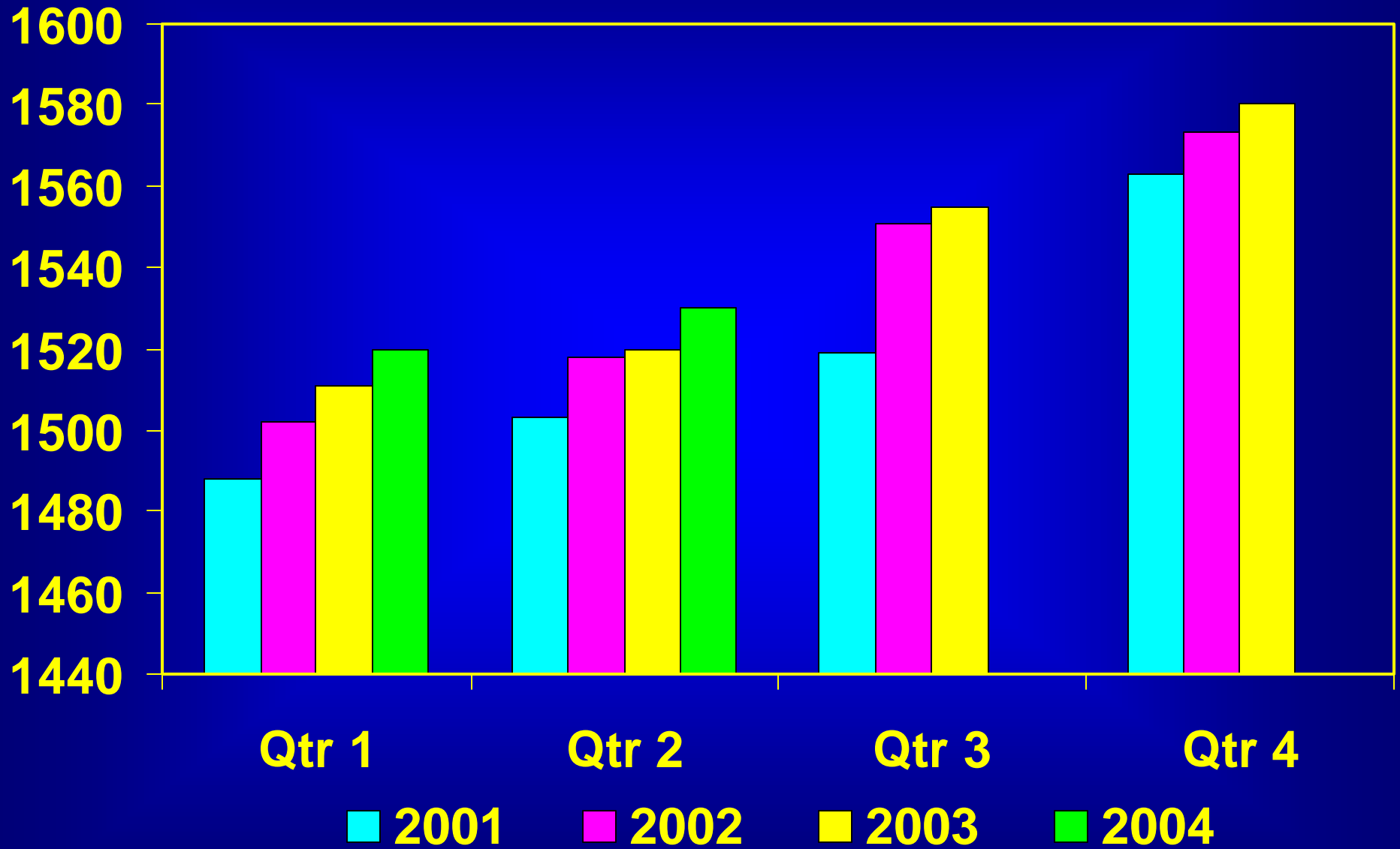
Broiler Production (Million Lbs)



Turkey Production (Million Lbs)



Egg Production (Million Dozen)



USDA Price Forecast

Quarter	2003 3	2003 4	2004 1	2004 2
12-City Broilers	60-62 +8%	58-62 +12%	57-61 -2%	59-63 +2%
Eastern Turkeys	63-65 -4%	68-72 +3%	59-63 0%	63-67 +7%
New York Eggs	74-76 +15%	77-83 +6%	74-80 0%	69-75 -3%

Special Thanks

- **Livestock Market Information Center**
- **USDA ERS Livestock, Dairy and Poultry**